



Supported
Employment
Demonstration

Overview of the Supported Employment Demonstration (SED)

Conducted by Westat under contract to the Social Security
Administration

Supported Employment Demonstration (SED)

- Funded by the U.S. Social Security Administration
- 6-year study
- Purpose: To look at how employment services, provided along with integrated behavioral health and social services, can help people with mental health impairments get a good job



Target Population

Social Security disability applicants:

- Age 18 to 49
- Lives in a study site catchment area
- Does not live in a residential/custodial facility
- Alleges or has a documented mental illness
- Denied *at the initial level* of the application process in past 30-60 days (no technical denials)
- Expresses a desire to work

Intervention Package

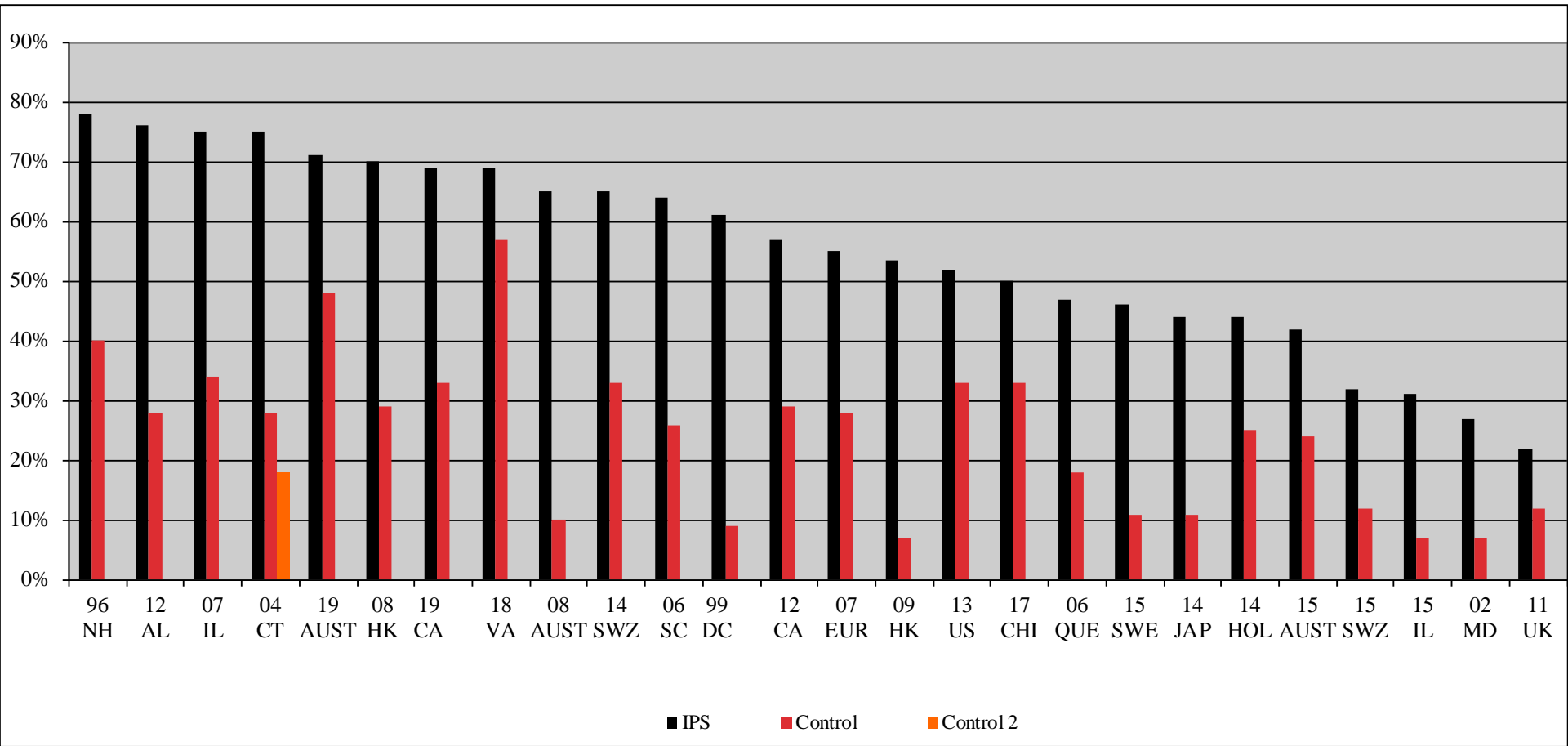
Services

- Individual Placement and Support (IPS) employment services
- Behavioral health services (as needed)
- Medication management services (as needed)

Other Supports

- Funding for Individual Work-Related Expenses
- Care Manager services and funding to remove barriers to working
- Funding for treatment-approved behavioral health services

Competitive Employment Rates in 26 Randomized Controlled Trials of IPS

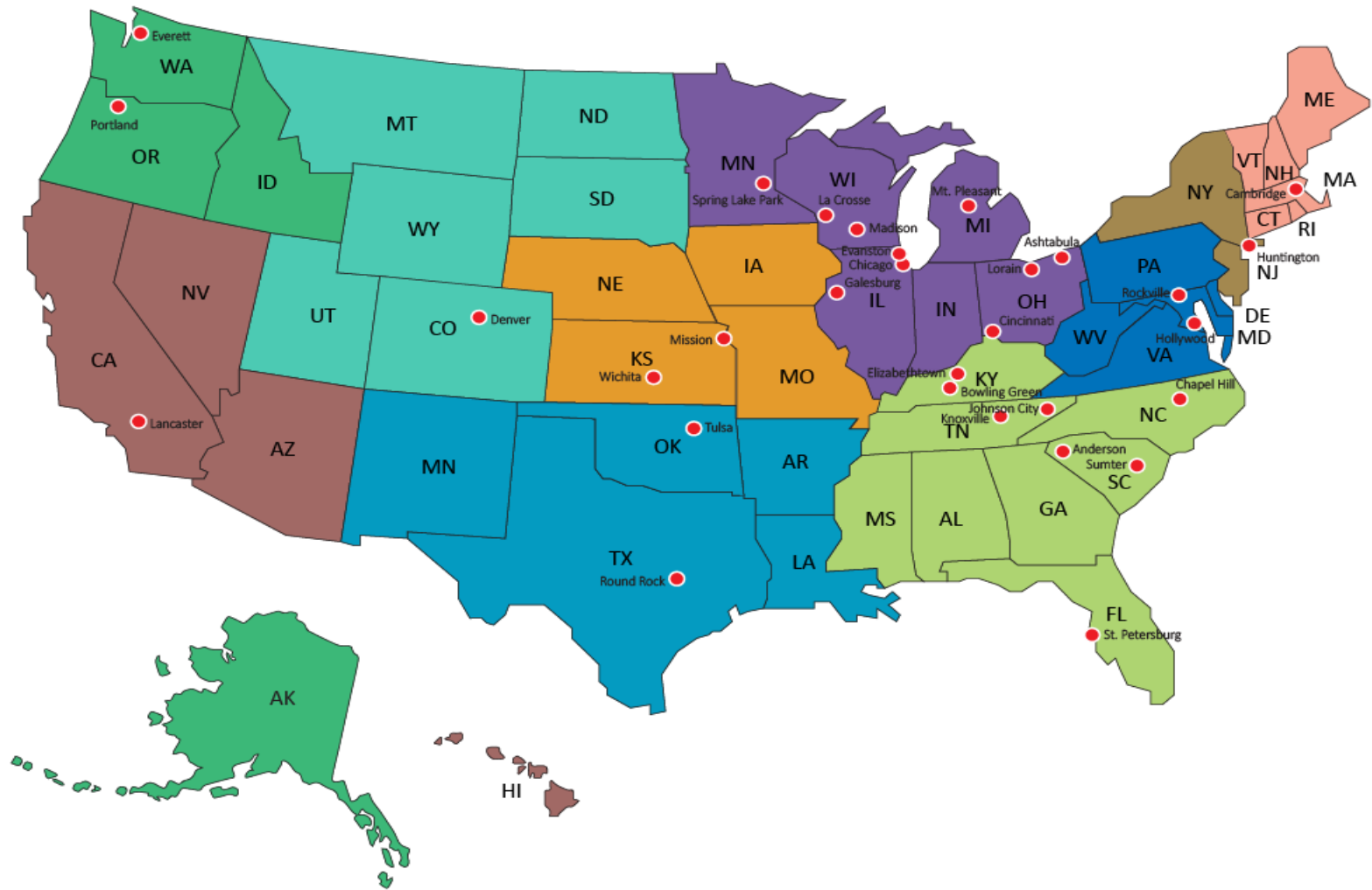


Scope of the SED

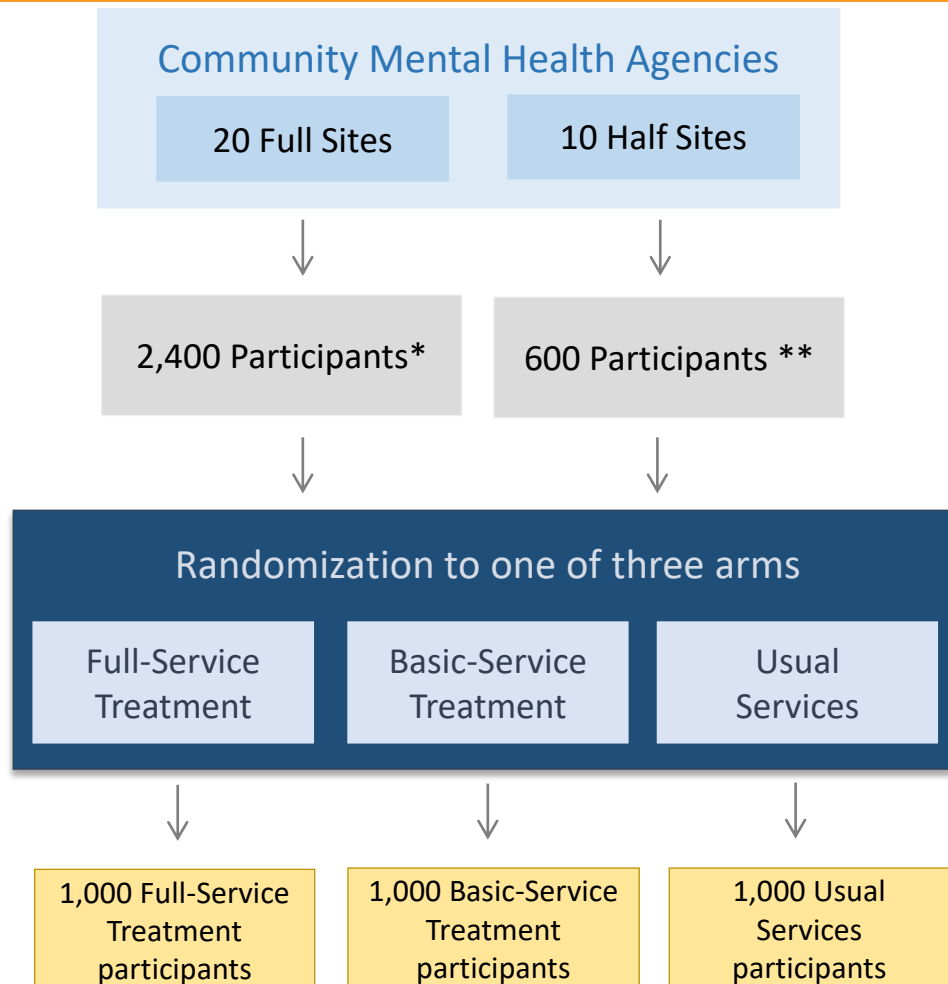
- 30 community mental health agencies (CMHAs)
- 3,000 participants
- Study randomly assigns enrollees to 1 of 3 study conditions
- Individuals consent to participate for 36 months
- Individuals complete telephone interviews every 3 months



Demonstration Site Locations



Randomized Controlled Trial Design

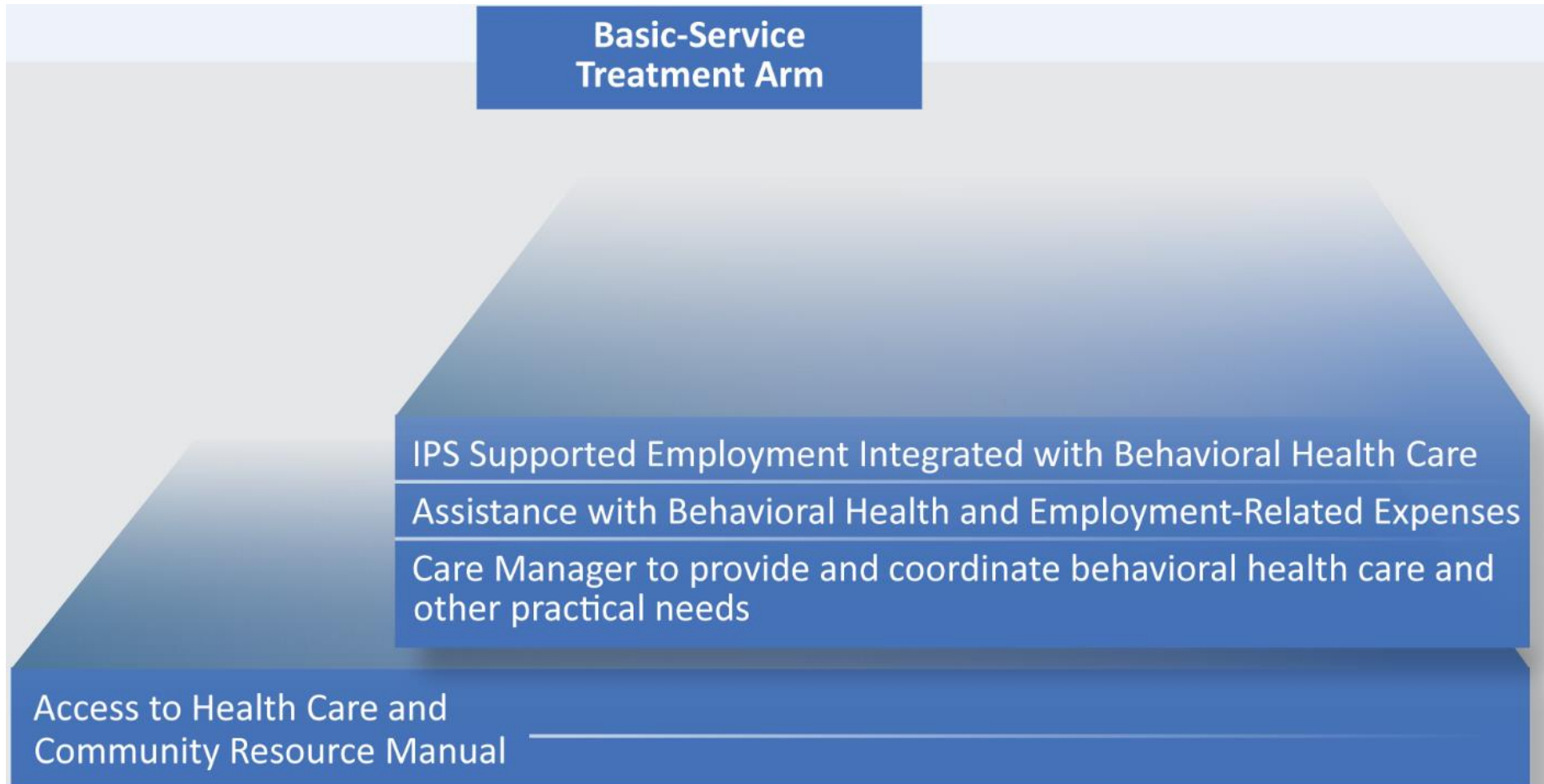


Study Design Overview

Usual Services
(Control) Arm

Access to Health Care and
Community Resource Manual

Study Design Overview



Study Design Overview



Primary Outcome of Interest

Any employment

Secondary Outcomes

- **Employment characteristics**
Earnings, months earning above SGA, months employed, job tenure, time to first job, employment in a competitive job
- **Clinical recovery**
Mental health, physical health, hospital stays, emergency room visits
- **SSA benefits**
Number of days to first appeal, appeals, benefit awards, total benefits received
- **Public benefits**
SNAP, TANF, Medicaid
- **Other**
Satisfaction with life, encounters with justice system

Study Timeline



Study Contacts

- **Co-Principal Investigator, Evaluation Lead**
William Frey, Ph.D.
(301) 610-5198
williamfrey@westat.com
- **Co-Principal Investigator, Implementation Lead**
Robert Drake, Ph.D.
(603) 678-4528
robertdrake@westat.com
- **Operations Director**
Jarnee Riley, M.S.
(240) 453-2724
jarneeriley@westat.com