



www.SMIadviser.org

THE ROLE OF MEDICATION IN CRISIS CARE

Robert Cotes, MD

Associate Professor, Dept. Of Psychiatry
Emory University School of Medicine

Charles Browning, MD

Chief Medical Officer
RI International

Amy N. Cohen, PhD

Director, SMI Adviser
American Psychiatric Association

CSS-SMI INITIATIVE

The Clinical Support System for Serious Mental Illness (CSS-SMI) is a Substance Abuse and Mental Health Services Administration (SAMHSA) funded initiative implemented by the American Psychiatric Association (APA).



Funding for SMI Adviser was made possible by Grant No. SM080818 from SAMHSA of the U.S. Department of Health and Human Services (HHS). The contents are those of the author(s) and do not necessarily represent the official views of, nor an endorsement by, SAMHSA/HHS or the U.S. Government.

SMI ADVISER IS...

A national initiative that serves clinicians and providers across all mental health practice settings

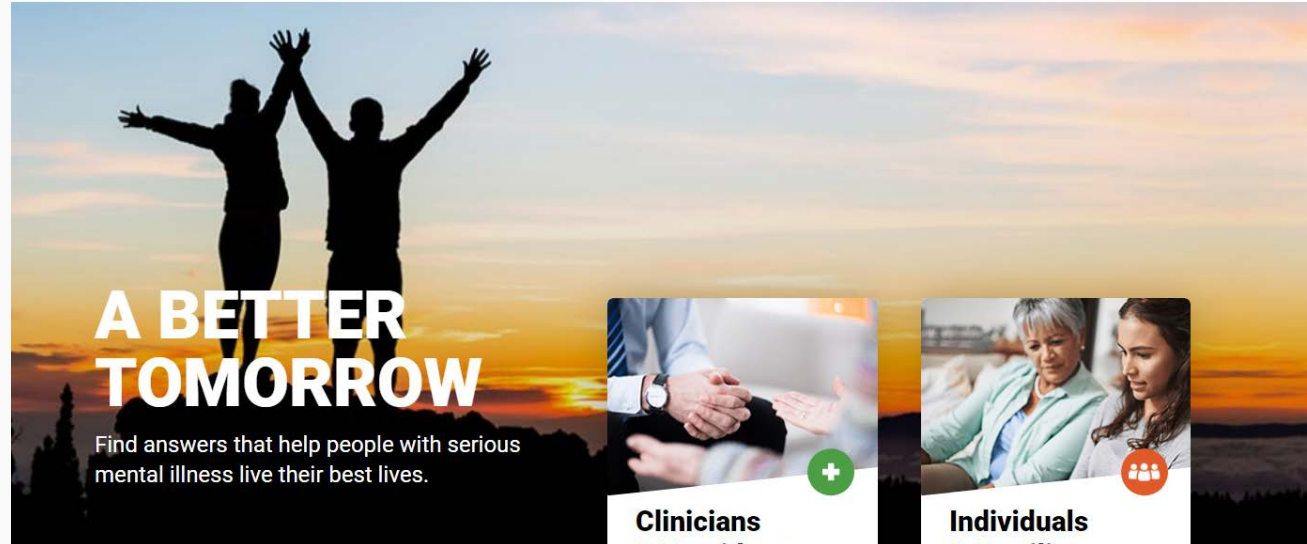
Focuses on the three most common conditions associated with serious mental illness: bipolar disorder, major depressive disorder, and schizophrenia



An APA and SAMHSA Initiative



- CLINICIANS ▾
- INDIVIDUALS & FAMILIES ▾
- OUR APPS ▾
- ABOUT US
- CALENDAR
- CONTACT
- Q



A BETTER TOMORROW

Find answers that help people with serious mental illness live their best lives.



Clinicians & Providers



Individuals & Families

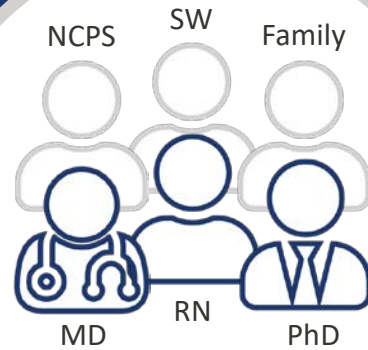


www.SMIadviser.org

Total Website Users
1,500,000+

SMI ADVISER OFFERS...

EDUCATION ON EVIDENCE-BASED PRACTICES



SMI Care Team

DIRECT CONSULTATION TO CLINICIANS

VETTED, EVIDENCE-BASED RESOURCES

SMI ADVISER EDUCATION CATALOG

Total Number of
Courses

400+

The screenshot displays the SMI Adviser Education Catalog interface. At the top, there is a search bar with the text "I'm looking for..." and buttons for "Search" and "Clear". Below the search bar are three filter dropdown menus labeled "Filter By": "SMI Subject", "Activity Type", and "Credit Type". The results section shows "Result 1 - 20 of 187" and a "Sort By" dropdown menu set to "Most Recent". Four course cards are visible, each with a "New!" badge, a thumbnail image, and a list of credit types (CME, NCPD, Psychology CE, Social Work CE, Participation). The course titles are: "Expanding the Evidence Base for the Crisis Care Continuum: Call Centers,...", "New Clozapine REMS: Staying Informed for the November 15 Changes", "Crisis Management Using Asynchronous Telehealth and Apps for People with...", and "Intimate Partner Violence and Disabling Psychiatric Conditions: Unique Risks,...". Each card has "View Details" and "Launch" buttons.

Live Webinars

On-Demand Webinars

Virtual Learning
Collaboratives

FREE ONLINE COURSES ON CRISIS CARE

- CME/CE-certified education on topics related to crisis services, de-escalation, trauma, and more



CME: 1 NCPD: 1 Psychology CE: 1
Social Work CE: 1 Participation: 1

Expanding the Evidence Base for the Crisis Care Continuum: Call Centers,...

[View Details](#) ⓘ

[Launch](#) ↗



CME: 1 NCPD: 1 Psychology CE: 1
Social Work CE: 1 Participation: 1

Lethal Means Counseling for Suicide Prevention

[View Details](#) ⓘ

[Launch](#) ↗



CME: 1 Psychology CE: 1
Social Work CE: 1 Participation: 1

Rural and Frontier CSC Considerations to Address Trauma and Race

[View Details](#) ⓘ

[Launch](#) ↗



CME: 1 NCPD: 1 Psychology CE: 1
Participation: 1

Creating and Sustaining High-Quality Crisis Services: A Systemic...

[View Details](#) ⓘ

[Launch](#) ↗

SMI ADVISER KNOWLEDGE BASE

- 1,100+ evidence-based resources in Knowledge Base

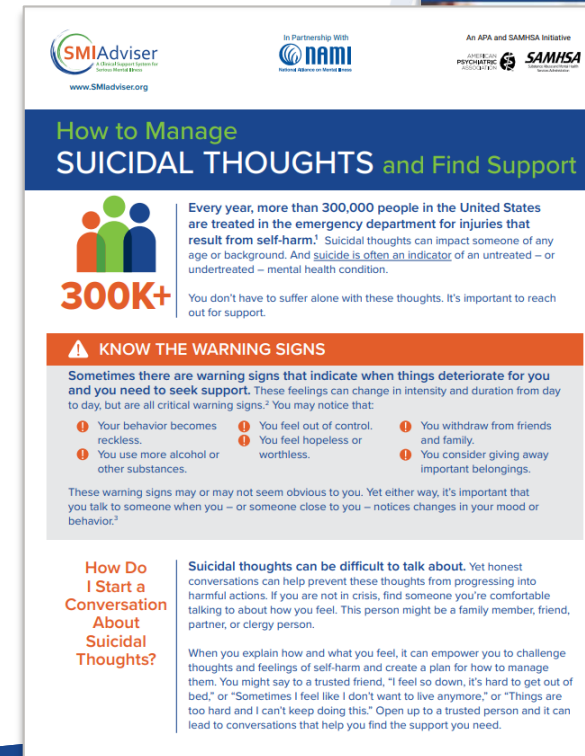
The screenshot displays the SMI Adviser Knowledge Base website. On the left, a sidebar contains the SMI Adviser logo and the text: "FIND THE ANSWERS YOU NEED IN OUR KNOWLEDGE BASE. Search topics, find resources, and enhance what you know about SMI." Below this is a search bar and a breadcrumb trail: "/ Knowledge Base (Clinicians)".

The main content area features a grid of topic cards, each with a representative image and a list of key questions:

- Clozapine**:
 - What is clozapine REMS?
 - Clozapine blood count monitoring
 - How do I interpret clozapine or nortriptyline blood, serum or plasma levels, what do these mean?
 - How does one dose or titrate clozapine dosage when starting on this medication?
 - Orthostatic hypotension, bradycardia, and syncope side effects of clozapine
- Co-morbid Medical Conditions**:
 - Management of physical health conditions in adults with severe mental disorders
 - Position Statement 13: Integration of Mental and General Health Care
 - How can people with serious mental illnesses better manage their chronic medical conditions and improve...
 - Why has it been so difficult to reduce the mortality gap for populations with serious mental illness?
- Co-morbid Substance Disorders**:
 - If marijuana is legal, is it ok for patients with mental illness to use it?
 - Is substance abuse common in people with mental illness?
 - What are smoking cessation tools for people with mental illness?
 - What are the best ways of helping people with mental illnesses quit tobacco?
- Manualized Psychotherapies**:
 - Are there evidence-based strategies for treating borderline personality disorder?
 - How is Interpersonal Therapy different from Psychoanalysis for depression?
 - We have manualized evidence-based treatments, but no one uses them. How can we improve attendance rates?
 - What is cognitive remediation therapy?
 - What is Cognitive-Behavioral Therapy for Psychosis (CBTp)?
- Mood Disorder**:
 - Does obstructive sleep apnea impact serious mental illnesses?
 - How do I know if depression is severe?
 - Is adjustment disorder a serious mental illness?
 - Since bipolar disorder is partially genetic, is there testing for a genetic predisposition for this?
 - What is cognitive therapy for bipolar disorder?
- Peer Specialists**:
 - Do peer support specialists encourage the people they serve in taking medications?
 - Do peer support specialists require a specific model of supervision?
 - How are peer support services paid for? Is peer support Medicaid reimbursable?
 - What is the nature of the relationship between a peer support specialist and the people they serve?
- Collaborative Care / Integrated Care Models**: (Image of healthcare professionals)
- Family Involvement / Engagement**: (Image of two men talking)
- Forensics**: (Image of a person reading a book)
- Psychopharmacology**: (Image of a pharmacist)
- Schizophrenia**: (Image of a person sitting on the floor)
- Self-management**: (Image of a person at a computer)

KNOWLEDGE BASE RESOURCES ON CRISIS CARE

- Guide on Suicide and Serious Mental Illness created in partnership with the Suicide Prevention and Resource Center
- Fact sheets, videos, and other resources created in partnership with National Alliance on Mental Illness



CONSULTATIONS FROM EXPERTS IN SMI

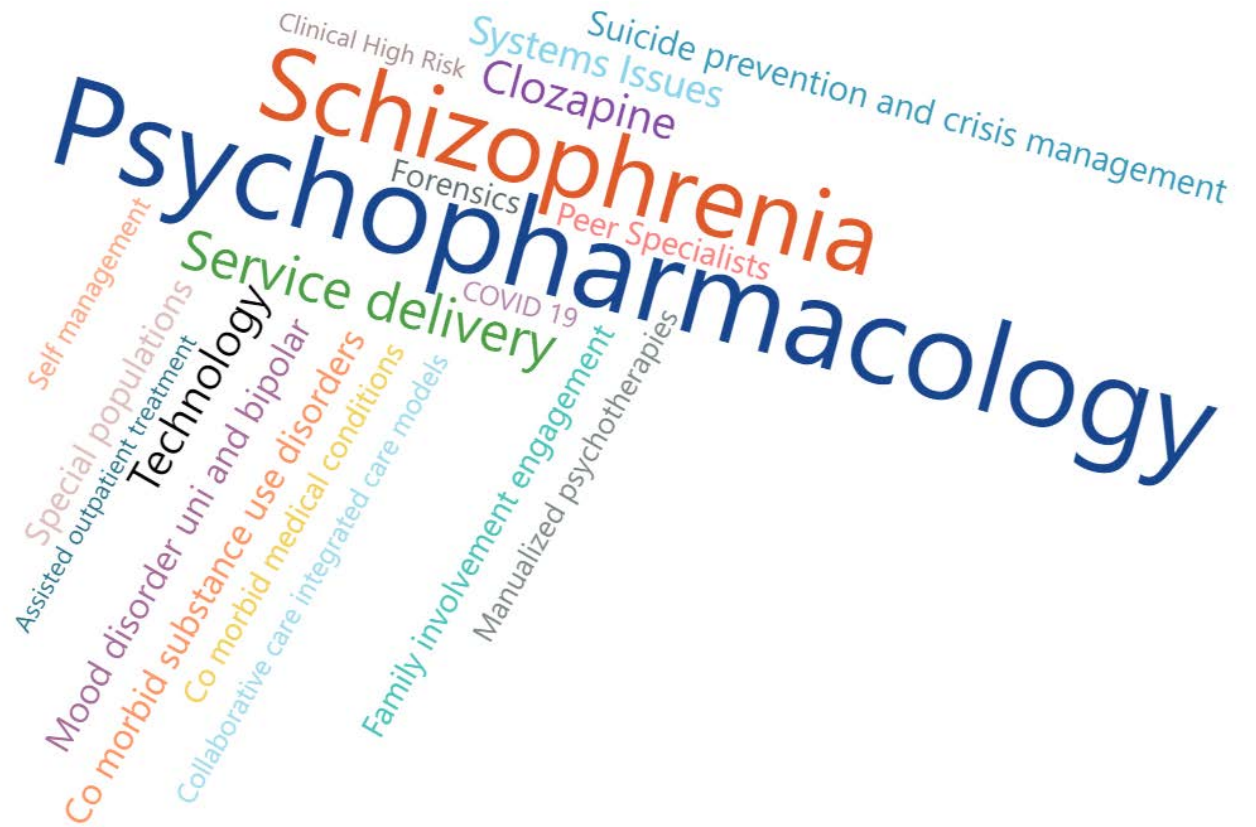


✔ Ask about psychopharmacology, therapies, recovery supports, patient and family engagement, education, and more

✔ Receive guidance within one business day

CLINICIAN-TO-CLINICIAN CONSULTATIONS

Total Number of Consultations:
3,000+



Data as of June 21, 2022



CLOZAPINE CENTER OF EXCELLENCE

- Focused on increasing and improving the use of clozapine in treatment refractory schizophrenia
- Led by Robert Cotes, MD and NASMHPD
 - <http://SMIAdviser.org/clozapine>



LONG-ACTING INJECTIBLES CENTER OF EXCELLENCE

- Provides resources, education, consultation, and tools on using LAIs
- Led by Robert Cotes, MD, and Donna Rolin, PhD, APRN
 - <http://SMIAdviser.org/lai>



CLOZAPINE AND LAI CENTER OF EXCELLENCE EXCHANGE

- 480+ clinicians subscribe to this listserv
- Ask questions, share ideas, and engage with peers across the country
- Discussions on dosing, managing side effects, monitoring, and much more

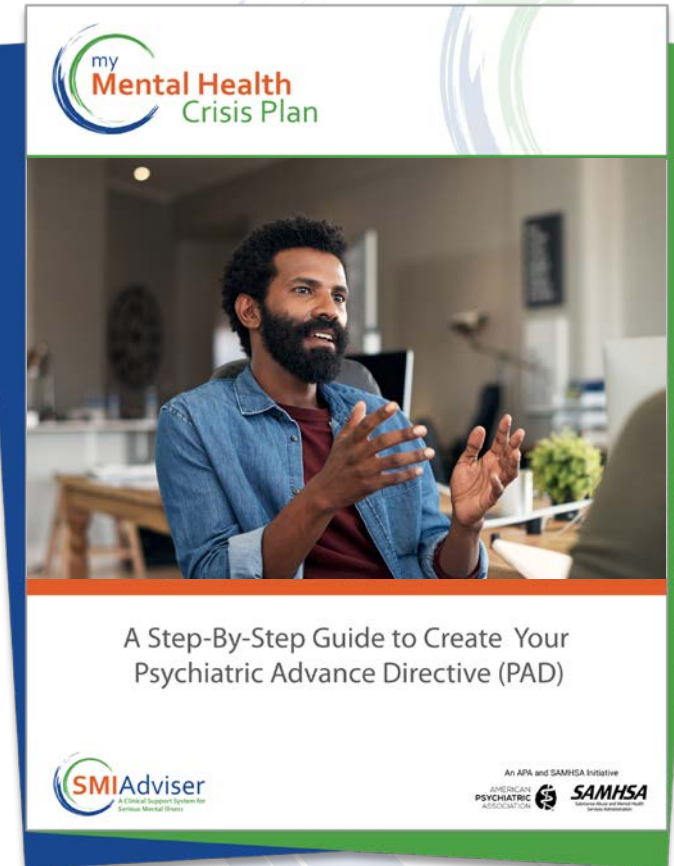
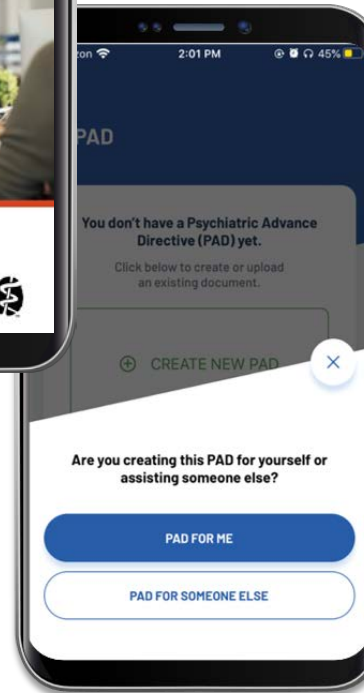
Join the Clozapine and LAI Centers of Excellence Exchange

The Clozapine and LAI Centers of Excellence Exchange engages psychiatrists, nurses/nurse practitioners, pharmacists, and other clinicians, providing an opportunity to collaborate on the use of clozapine and long-acting injectables. Sign up for this listserv and join the conversation!

[Sign Up Now >>](#)

MY MENTAL HEALTH CRISIS PLAN

- ✔ Individuals and family members can use the app
- ✔ Facilitators can help individuals create a PAD



SMIadviser.org/padapp



EDUCATION AND RESOURCES ON CRISIS PLANNING

- CME/CE-certified education on topics related to psychiatric advanced directives, legal considerations, and more

Navigating a Mental Health Crisis: Resource Guide and Infographics ☆

These resources were created by the National Alliance on Mental Illness, an SMI Adviser content partner, and approved by the SMI Adviser clinical expert team for inclusion in the knowledge base.

NAMI developed this guide to support people experiencing mental health crises, their friends and families by providing important, sometimes lifesaving information. This guide outlines what can contribute to a crisis, warning signs that a crisis is emerging, strategies to help de-escalate a crisis and resources that may be available for those affected. Also included is information about advocating for a person in crisis along with a sample crisis plan.

[Navigating a Mental Health Crisis \(Resource Guide\)](#)

[Warning signs \(Infographic\)](#)

[What to do if you suspect someone is thinking about suicide \(Infographic\)](#)

[What to do in a mental health crisis \(Infographic\)](#)

[Preparing for a crisis \(Infographic\)](#)

[A crisis plan \(Infographic\)](#)



CME: 1 NCPD: 1 Psychology CE: 1

Social Work CE: 1 Participation: 1

Psychiatric Advance Directives (PADs): A Tool for Improving Crisis Care...

[View Details](#) ⓘ

[Launch](#) ↗

The logo for SMI Adviser features a stylized circular graphic composed of overlapping green and blue brushstrokes. To the right of this graphic, the text "SMI Adviser" is displayed in a large, sans-serif font, with "SMI" in orange and "Adviser" in blue. Below the main title, the subtitle "A Clinical Support System for Serious Mental Illness" is written in a smaller, green, sans-serif font.

SMI Adviser

A Clinical Support System for
Serious Mental Illness

AMERICAN
PSYCHIATRIC
ASSOCIATION



SAMHSA
Substance Abuse and Mental Health
Services Administration

www.SMIadviser.org

Amy Cohen, PhD
acohen@psych.org

Robert Cotes, MD
robert.o.cotes@emory.edu

Charles Browning, MD
charles.browning@riinternational.com

