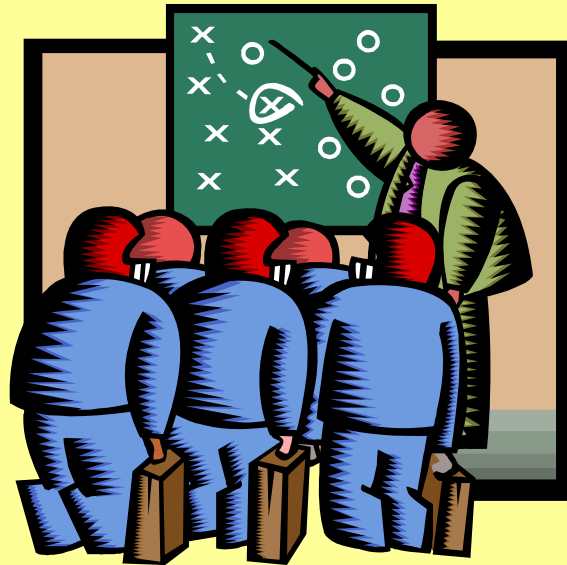


Serving Individuals with Co-Occurring Behavioral & Developmental Disabilities

Analyzing State Service Delivery Strategies



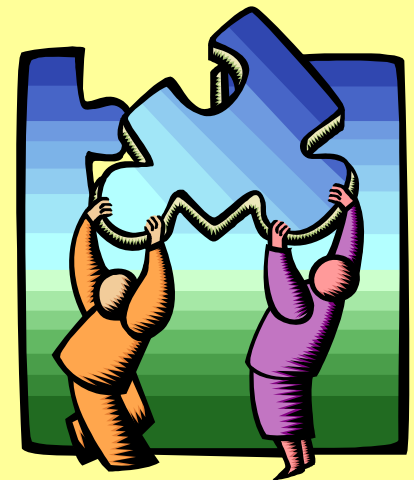
Bob Gettings

Winter Meeting
National Association of State Mental Health Program Directors

Washington, D.C.
December 12, 2005

Components of Co-Occurring Disabilities Study

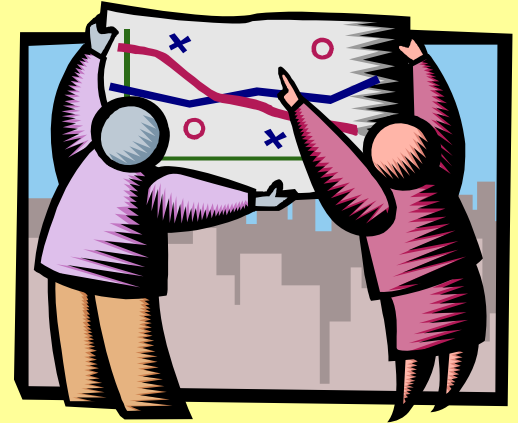
- Joint NASDDDS-NASMHPD Membership Survey: 2003
- NASMHPD Seminar: 2003
- Best Practices Monograph: 2003
- NASDDDS Membership Survey: 2004
- NASDDDS Invitational Seminar: September 2004
- In-depth Analysis of Service Delivery Practices in 13 Selected States: 2005
- Final Project Report: 2006



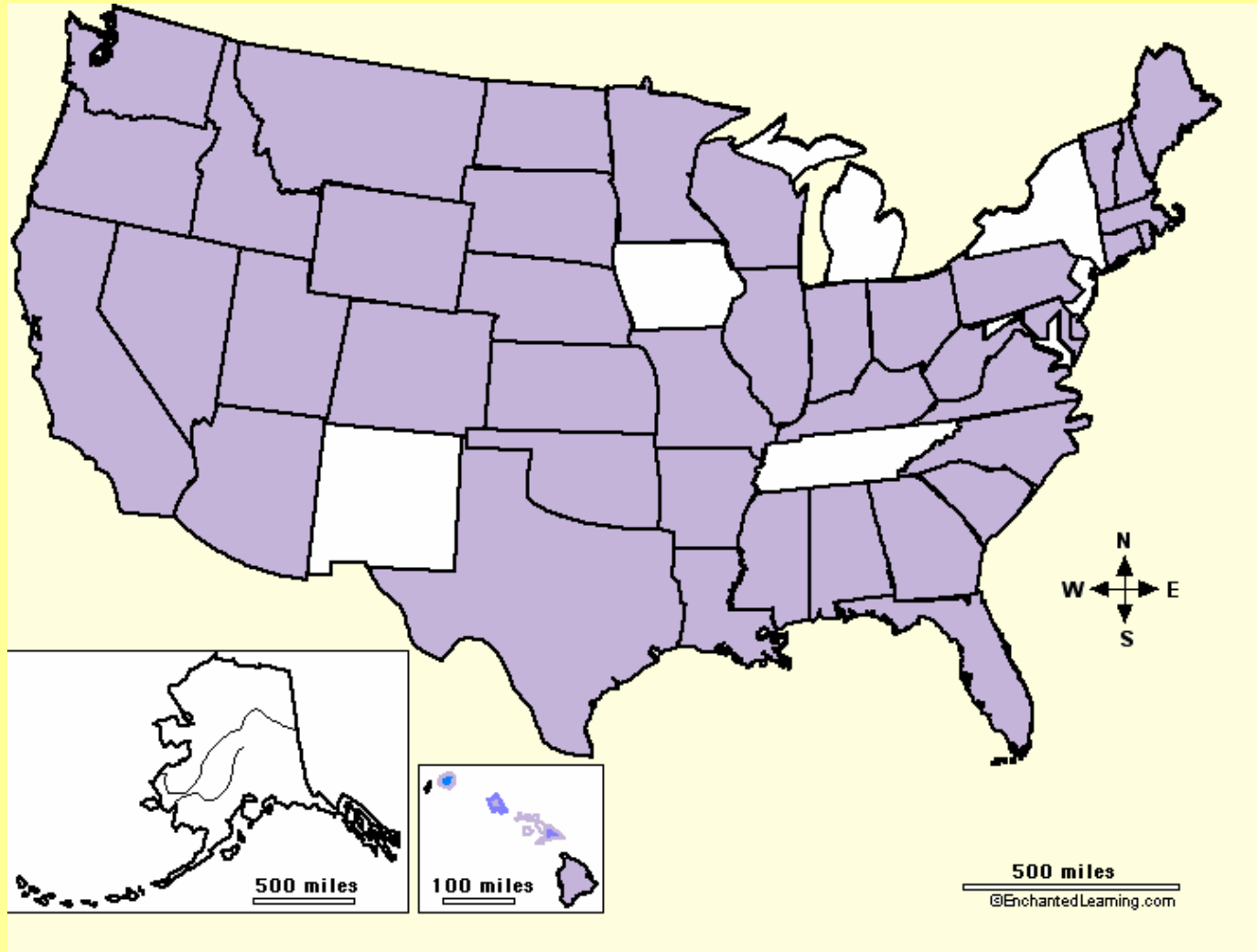
2004 NASDDDS Membership Survey

Key Aims

- Determine patterns of cross-agency responsibility for financing and delivering services
- Identify key barriers to effective service delivery
- Establish locus of responsibility for crisis response services
- Pinpoint factors contributing to effective services



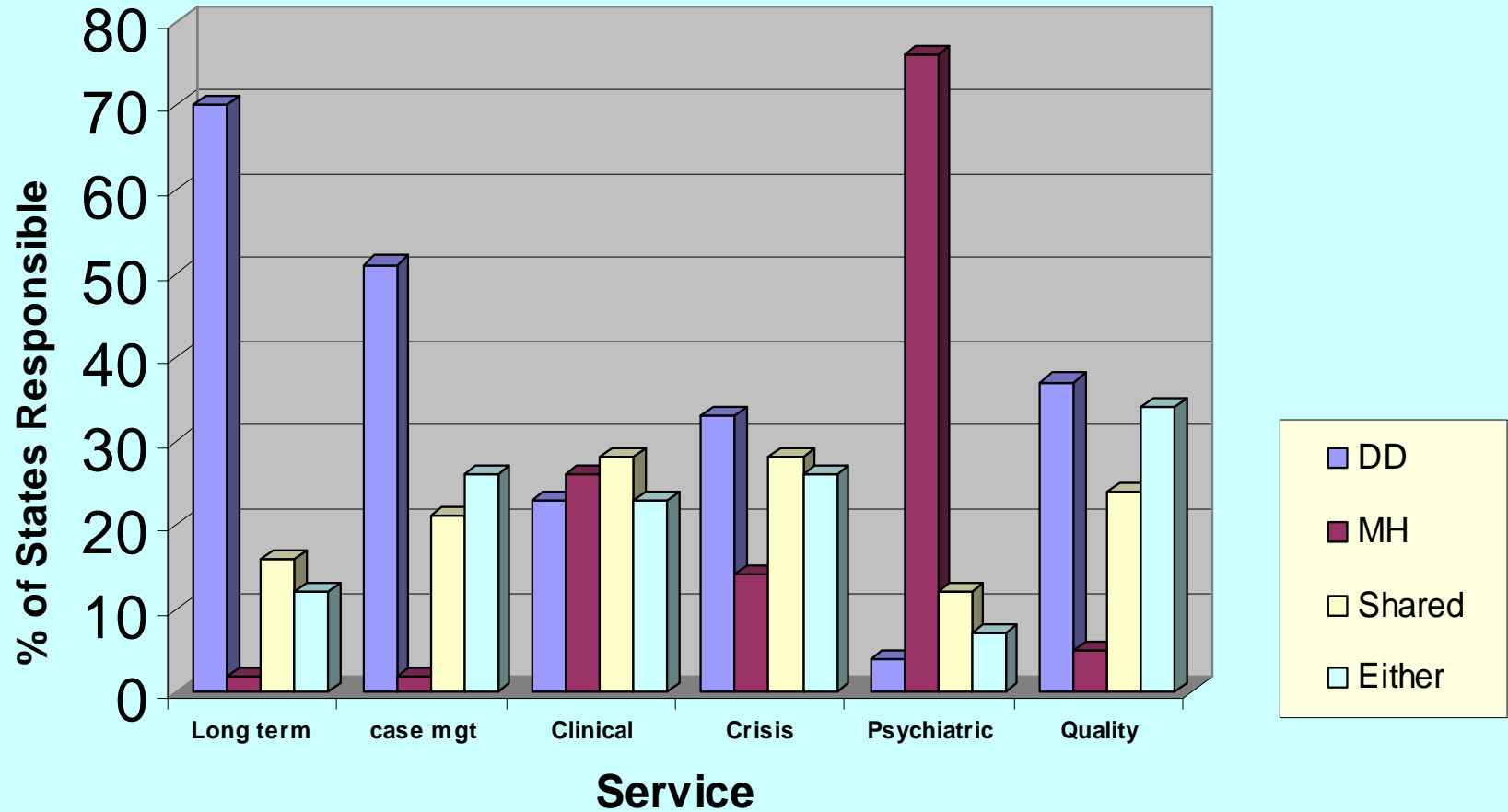
Responding States



44 of 51 states responded - 86%

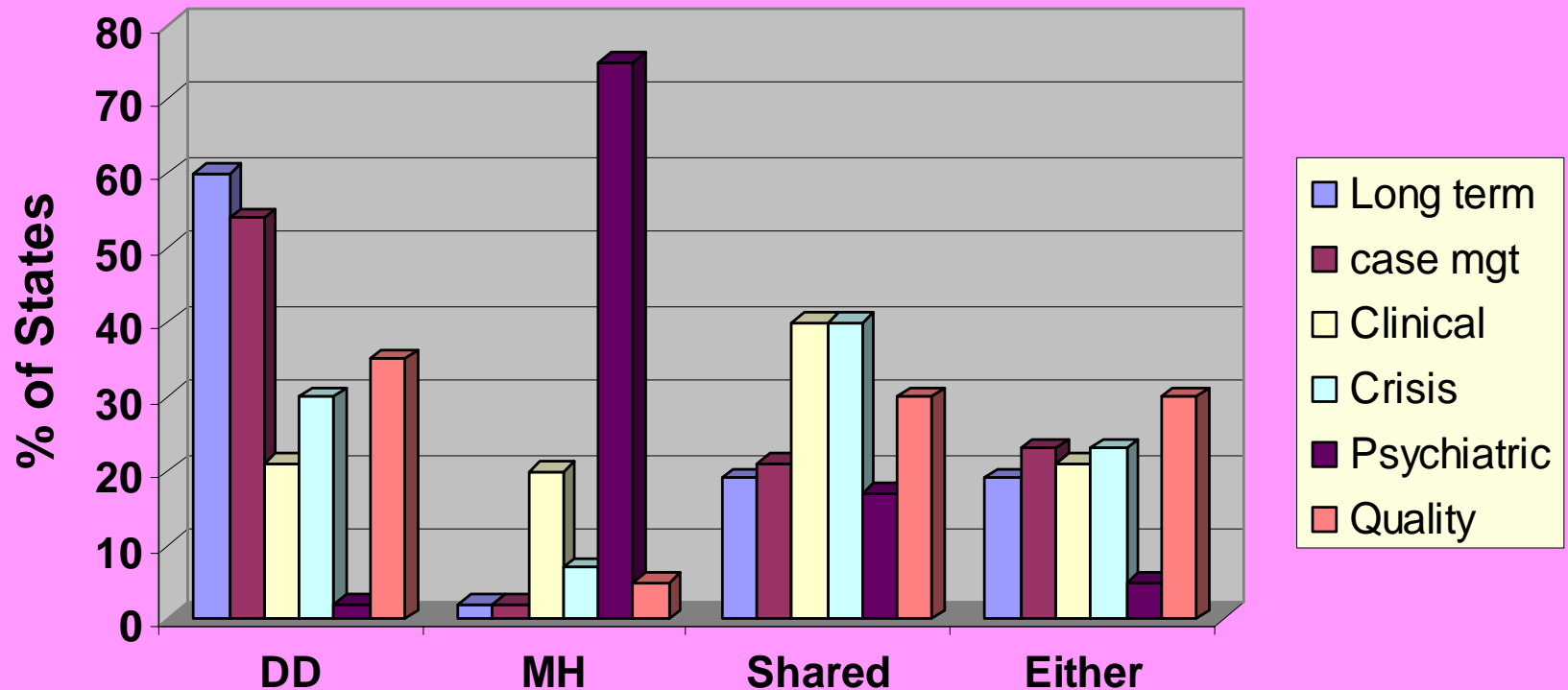
Who Pays?

Payment Responsibility



Who Provides?

Service Provision Responsibility by State Agency



Top 5 Barriers to Serving Individuals with Co-Occurring Conditions

- Insufficient number of qualified providers
- Unwillingness of providers to serve individuals with challenging behaviors
- Poor interagency coordination
- Structural impediments to cross-system collaboration
- Inadequate and/or poorly targeted funding

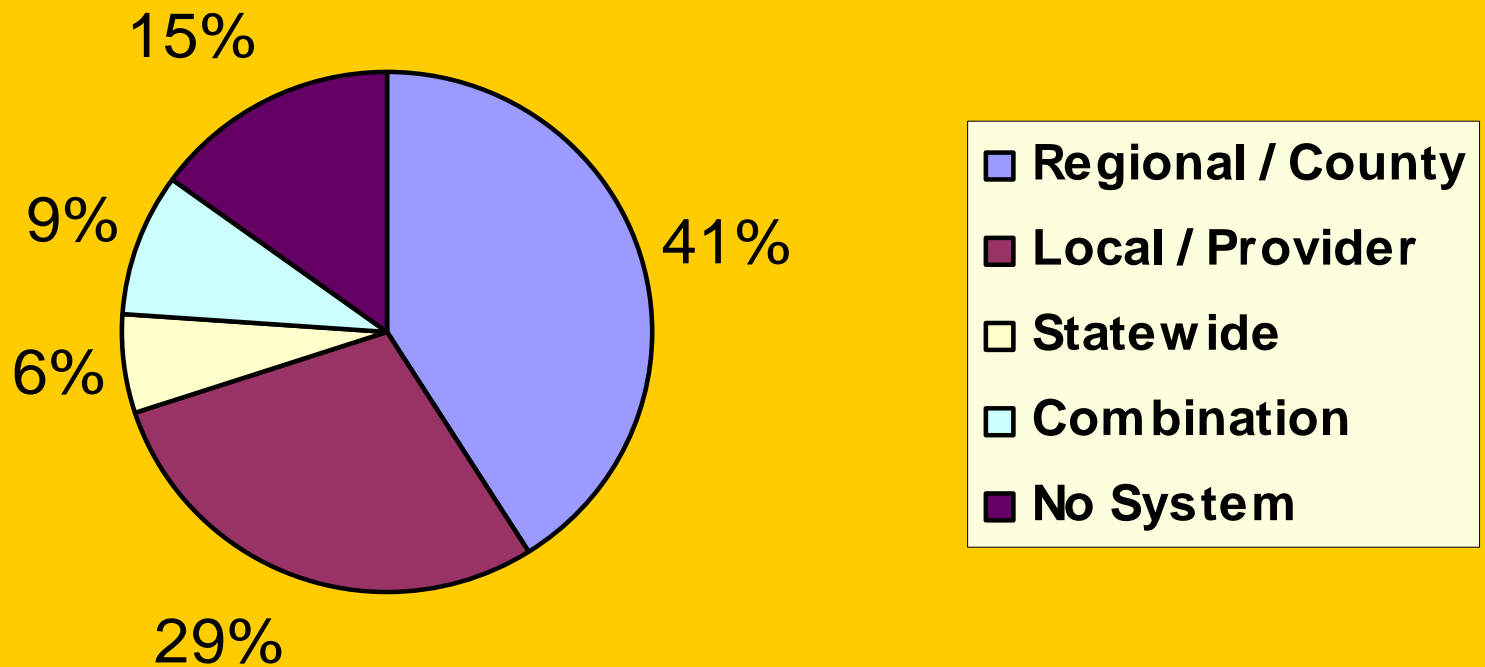


Provider Availability Barriers

- Inadequately trained staff: 69%
- The lack of effective, back-up crisis intervention and support: 56%
- The shortage of clinicians: 49%
- The shortage of community residential capacity: 47%

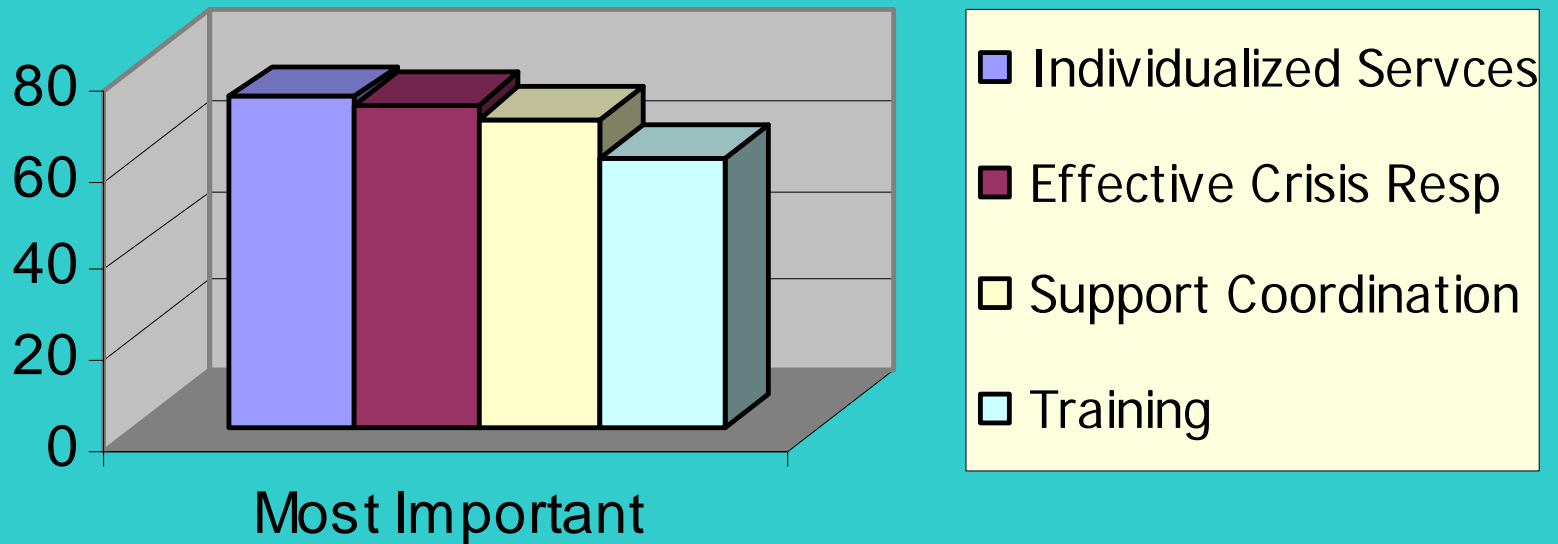


Locus of Crisis Response Capability

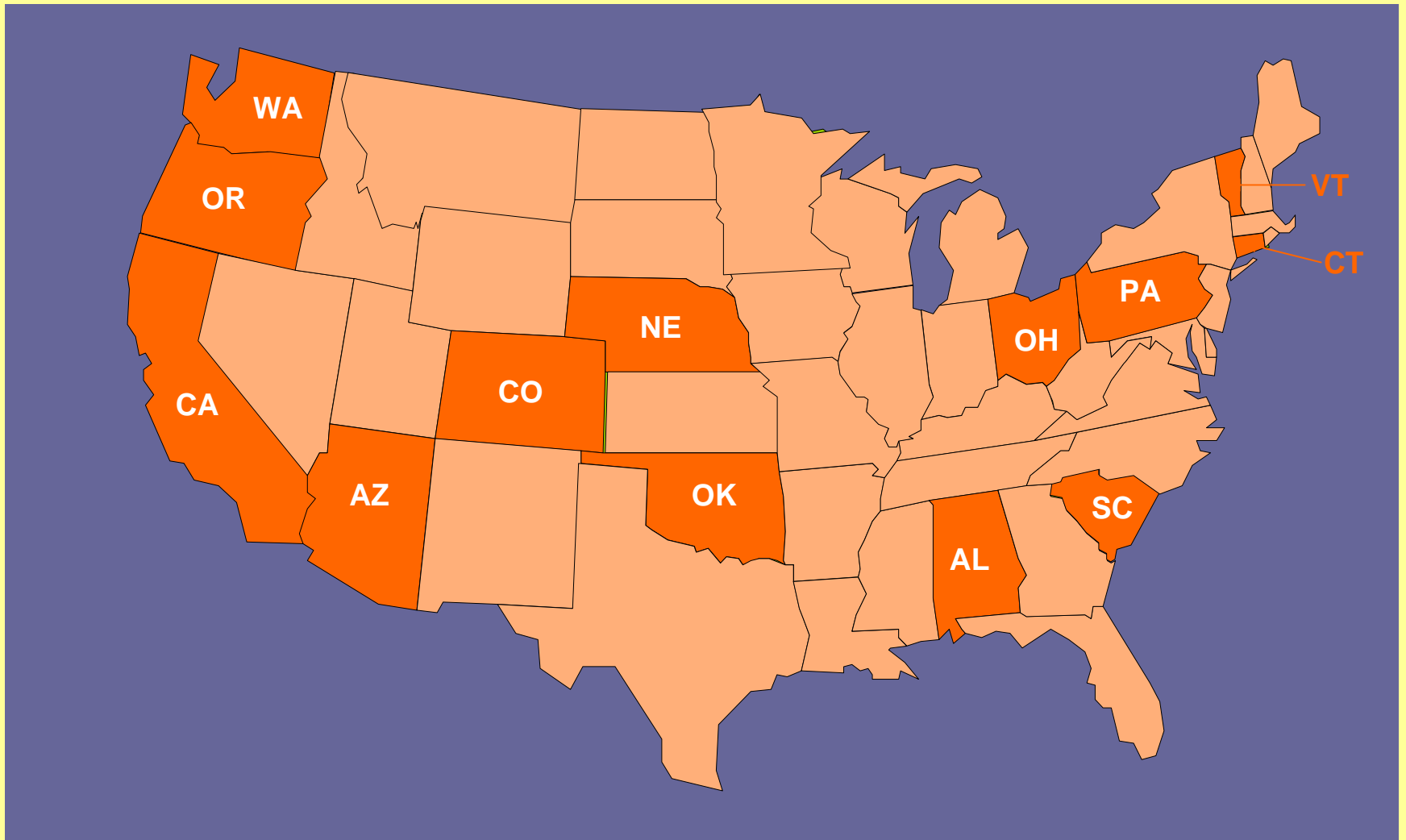


What Works?

Factors Contributing to Effective Services



States Participating In-Depth Review Phase of Studies



Aims of In-Depth Analysis

- To identify the commonalities and differences in the approaches the 13 study states use to address the needs of individuals with co-occurring disabilities:
 - ✓ Organizational structure
 - ✓ Locus of responsibility for key functions
 - ✓ Financing methods
 - ✓ Types and level of interagency collaboration
 - ✓ Eligibility determination criteria and needs assessment methods
 - ✓ Methods of providing and financing crisis response capabilities
- To pinpoint key lessons regarding the effective delivery of services and supports to this target population that can be derived from the experiences of the study states.

Preliminary Findings Emerging from the 13 State Study

- Effective crisis intervention is a key to avoiding unnecessary institutionalization and maintaining persons with co-existing conditions in integrated community settings;
- Interagency roles and responsibilities typically are clearly defined in states with strong support systems for persons with a combination of behavioral and cognitive disabilities;

Preliminary Findings Emerging from the 13 State Study *cont...*

- The ability to tailor support plans to the individual needs of each person is generally crucial to providing effective community support for individuals with co-occurring disabilities.
- Funding flexibility is another common characteristic of effective community support networks for person with dual diagnoses.
- Even states with strong community support networks struggle to maintain adequate capacity - and funding - to serve individuals with co-occurring developmental and behavioral disabilities.

Next Steps

- Draft profiles have been shared with key informants in each of the 13 study states. The feedback received from these state reviewers will be incorporated in the individual state profiles by early next year.
- The NASDDDS staff is in the process of synthesizing the commonalities and differences between the approaches used in the 13 study. This analysis will help identify the characteristics of effective system design and service delivery practices.
- This information, along with the results of earlier phases of the staff's work, will be pulled together in a final study report, which should be available by spring of 2006.

For Additional Information...

Visit the NASDDDS website at

<http://www.nasddds.org>

