



Regional SETH Facilitator

Scope of Work

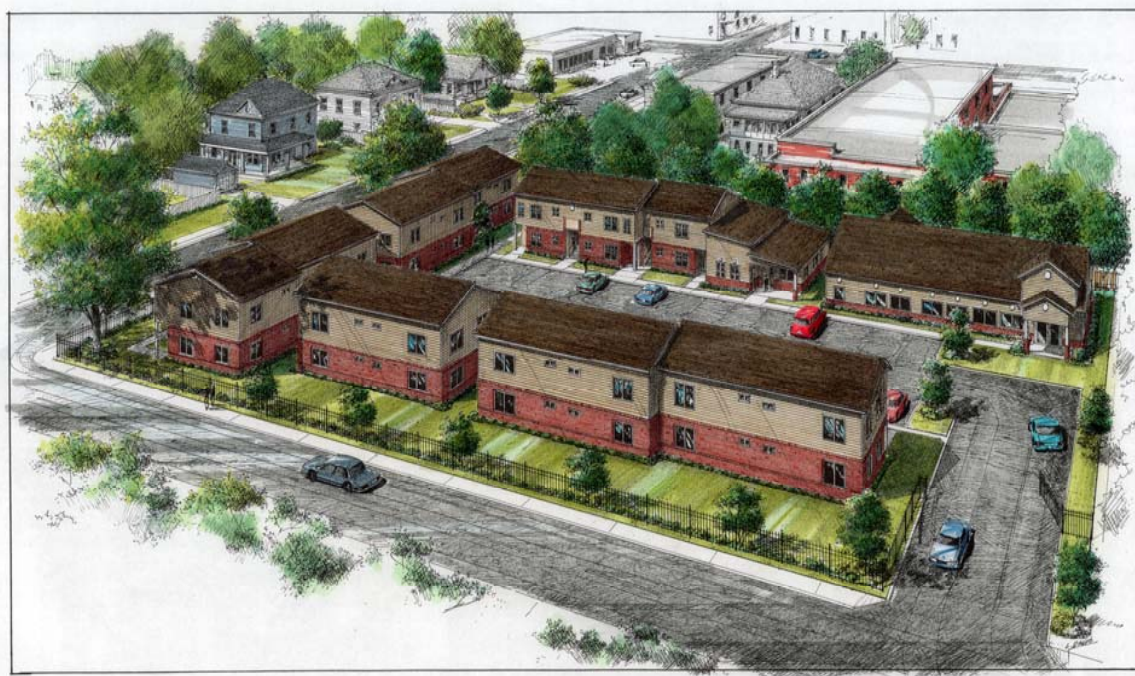
Foundations Associates, Inc.

- RSF met with Executive Director and provided information regarding Low Income Housing Tax Credits (LIHTC).
- RSF met with ED and bankers at site to assist with site control issues.
- Agency developed project without any further assistance from RSF.



Knob Hill Villas
Memphis, TN


Alpha Omega Veterans Services, Inc.



Court Street
Apartments
Memphis, TN

- In contrast, Alpha Omega Veterans Services – Court Street Project required approximately 30% of RSF's time for 30 months.
- RSF assisted in every aspect of development from presenting project to AOVS board of directors for approval to assisting with planning grand opening.


Alpha Omega Veterans Services, Inc.



THDA	\$238,362
Plough Foundation	\$245,000
HUD SHP	\$300,000
City of Memphis	\$500,000
FHLB AHP grant	\$575,140
Sponsor's equity	\$ 37,627
Total funding =	\$1,896,129

New construction of a two-story apartment complex containing 32 one-bedroom units, common area, and dining area. Twenty-four hour security staff and on-site support services.

Examples of activities

- 
- A hand is visible on the left side of the slide, pointing towards the list of activities. The hand is resting on a document that appears to be a blueprint or architectural drawing, with some lines and text visible. The background of the slide is a light blue gradient.
- Assess needs
 - Identify grant funding opportunities
 - Assist in securing funds
 - Facilitate community collaboration
 - Educate the community on best practice models
 - NIMBY issues
 - Assist with 501 (c) 3 application
 - Capacity building
 - Program development
 - Zoning issues
 - Licensure
 - Provide accurate figures for City planning
 - Gaps analysis