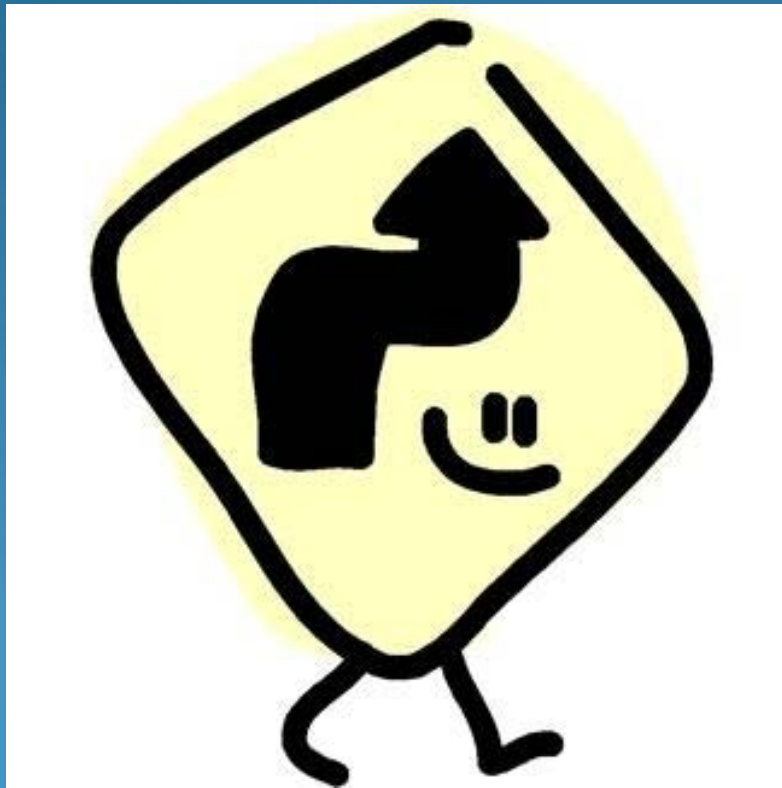


Statewide Systems of Care



Oklahoma
One State's Journey

Presented at Annual Meeting Children, Youth and Family Division

Wednesday - July 14, 2010
NASMHPD

By

- **Jacquelyn B. Shipp, LPC**, Director, Community Based Services, ODMHSAS
- **Gerri Mullendore, FSP**, Coordinator of Family Involvement
- **Sheamekah Williams, MSW**, Expansion Project Director
- **Keith Pirtle, MSW**, Senior Project Director, Oklahoma Systems of Care

Oklahoma's Goals



- Local systems of care statewide built upon our core values and principles.
- Wraparound statewide for all children and youth with complex mental health needs and their families
- Oklahoma Systems of Care as the catalyst for integration and change
- Improved outcomes for children, youth, and families

Oklahoma's Heart



- The Core Values and Principles
 - Community-Based
 - Culturally Competent
 - Family Driven and Youth Guided
 - Strengths-Based

Twelve Values of Oklahoma Systems of Care

Originally Adopted April 2, 2004 by State Team

Adopted by Partnership for Children's Behavioral Health in 2004

Revised in 2008 (Handout Available)

When you've seen one state... you've seen one state

Governor – less power than many states

- Presents an annual budget, negotiates with Legislature
- Appoints a Cabinet (also little power)
- Can veto legislation

State Agencies – Directors not appointed by Governor

- Governed by Boards
- Only informal relationship to Cabinet members

Counties

- Services in counties funded largely through state agencies
- Counties have little say in services available

Milestones

- **1999** - Oklahoma Legislature almost passed a bill to place children needing mental health care in state custody so that they could receive them
- **1999** – Oklahoma did not receive a SAMHSA SOC grant
- **1999** - First Local System of Care was funded through blended state funding in Kay County, closely followed by another in Tulsa
- **2002** - SAMHSA federal grant received to cover five counties
- **2003** - Oklahoma Systems of Care began building a state level infrastructure for training, coaching and ensuring high fidelity Wraparound (free of charge to providers)

Milestones

- **2004** - Partnership for Children's Behavioral Health was formed through MOU
- **2007** - Mental Health and Substance Abuse Services merged for Children, Youth, and Families within ODMHSAS paving the way for integrated SOC's
- **2008** - 35 Local Systems of Care covering 40 counties
- **2008** - Second SAMHSA grant received for statewide expansion of SOC – emphasis on decreasing disparity
- **2010** - 40 Local Systems of Care covering 46 counties
- **2011** – 9 additional counties soon to be funded!

Financial Viability

SAMHSA grant invaluable for everything accomplished!

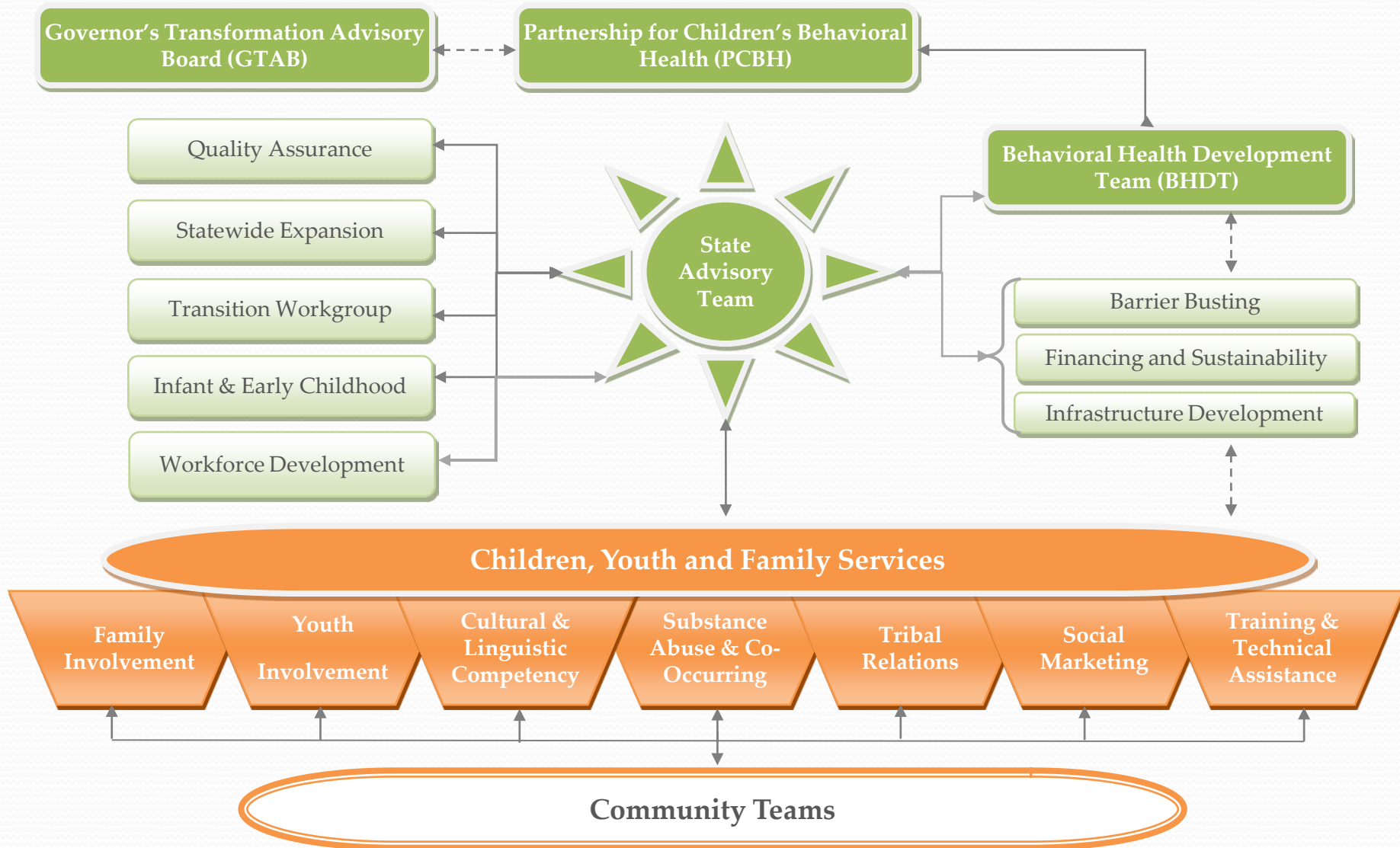
- Legislative Appropriations - Infrastructure
- Creation of Medicaid Billing Options for Wraparound
 - Family Support Provider
 - Behavioral Health Aid
 - Wraparound facilitation



Next Steps:

- Move into deeper partnerships and blended/braided funding with child welfare and juvenile justice
- Local SOC's:
 - Public/Private Partnerships
 - Establishing 501©(3)'s

Oklahoma's System of Care Structure



State/Community Partnership Formalized Process

Local Interest in SOC
Access to Community Toolkit

Technical Assistance by Oklahoma Federation of Families and the ODMHSAS

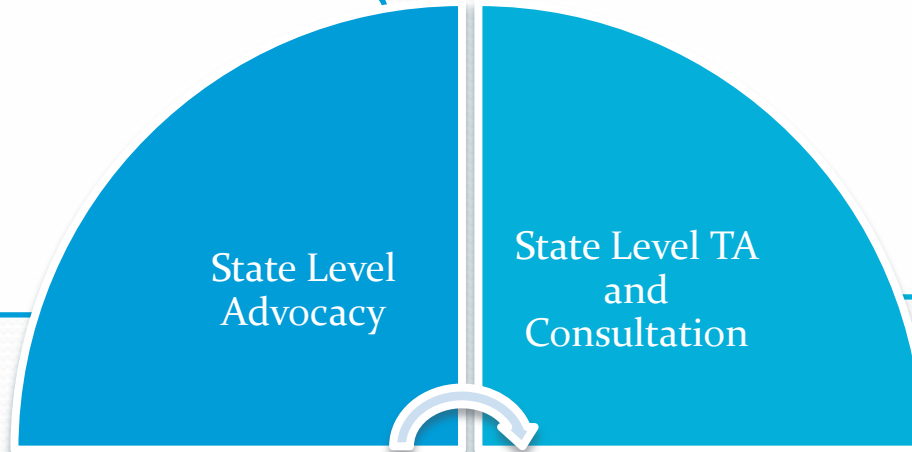
Application for Funding in response to Request for Proposals

Community is Funded and Receives Ongoing TA, Training and Coaching

Local SOC Evolves, Develops Strategic Plan, Oversees Host Agency Wraparound Development, and Takes Responsibility for Children's Mental Health

Evolution Foundation Oklahoma Federation of Families

- Coalition of Advocates
Participation on Boards
Media Representatives



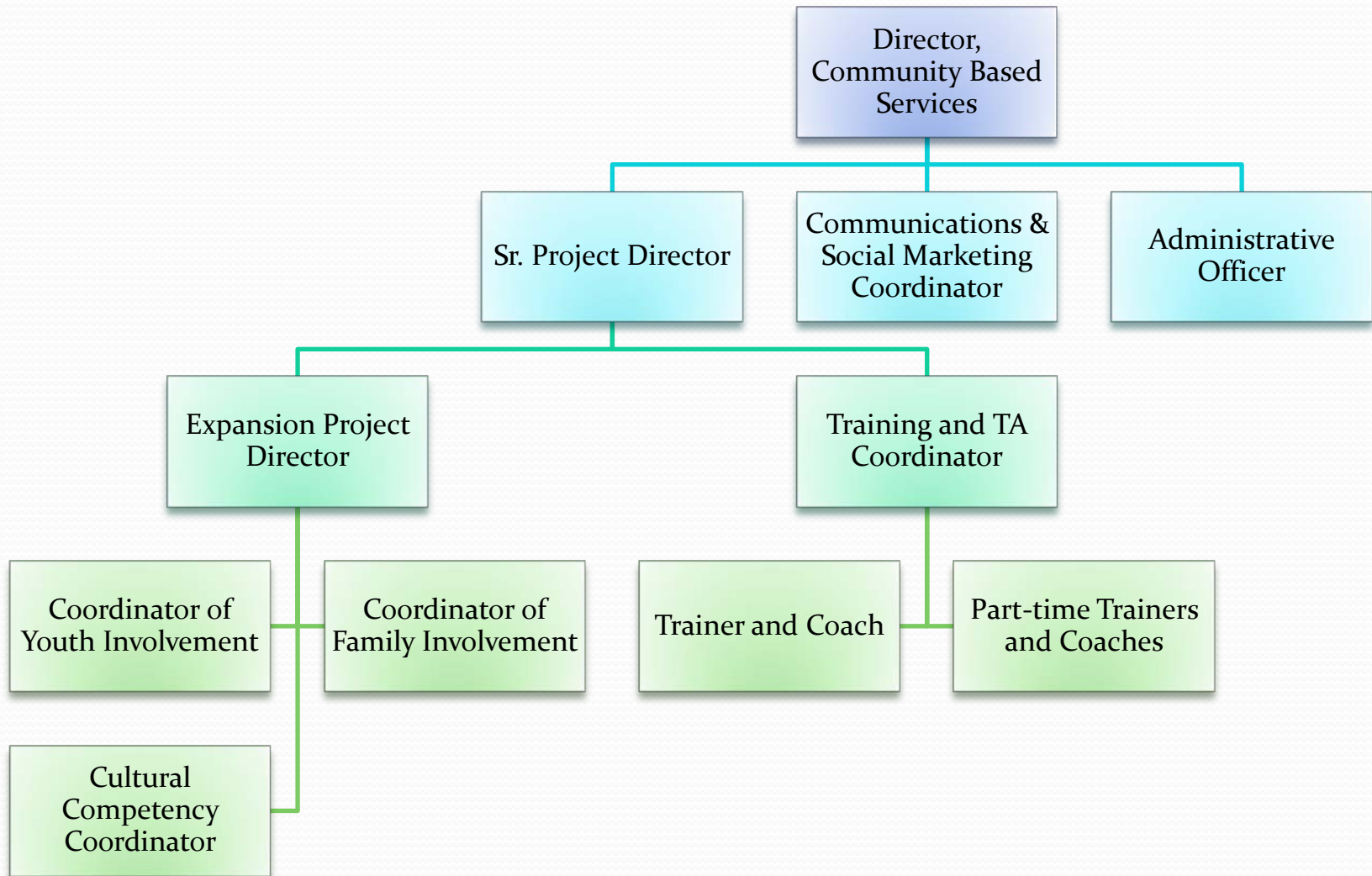
- Consultation with State Agencies
Partnership in Grant & Projects
Representing Family Voice

- Local Federation Chapters
Family Leadership Academies
Advocacy for Families



- Community Readiness
Strategic Planning
Trouble Shooting
Consultation

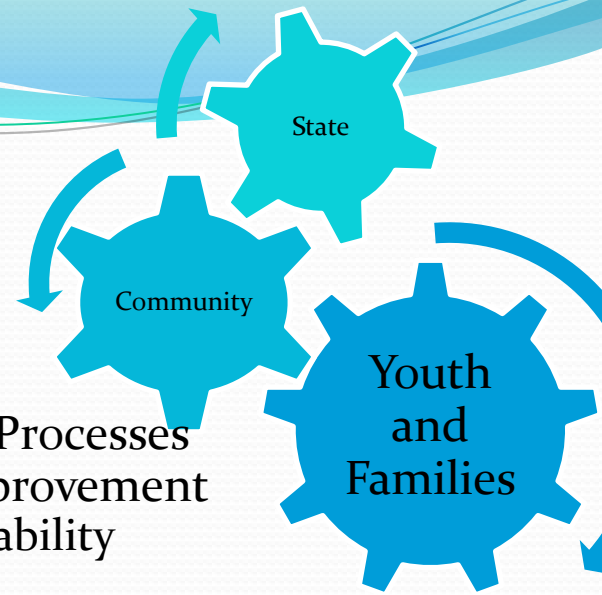
Oklahoma Systems of Care State Staff



Meeting the community where they are at

- Community readiness and development for system change
- RFP (built to address unique community and cultural needs, infusing the values and principles of SOC)
- TA and support from family lead organization (family involvement - we are in this together)
- Key partners involvement with shared vision (DHS, OJA, Health Department, schools, and other systems)
- State and local level (same vision, same values)

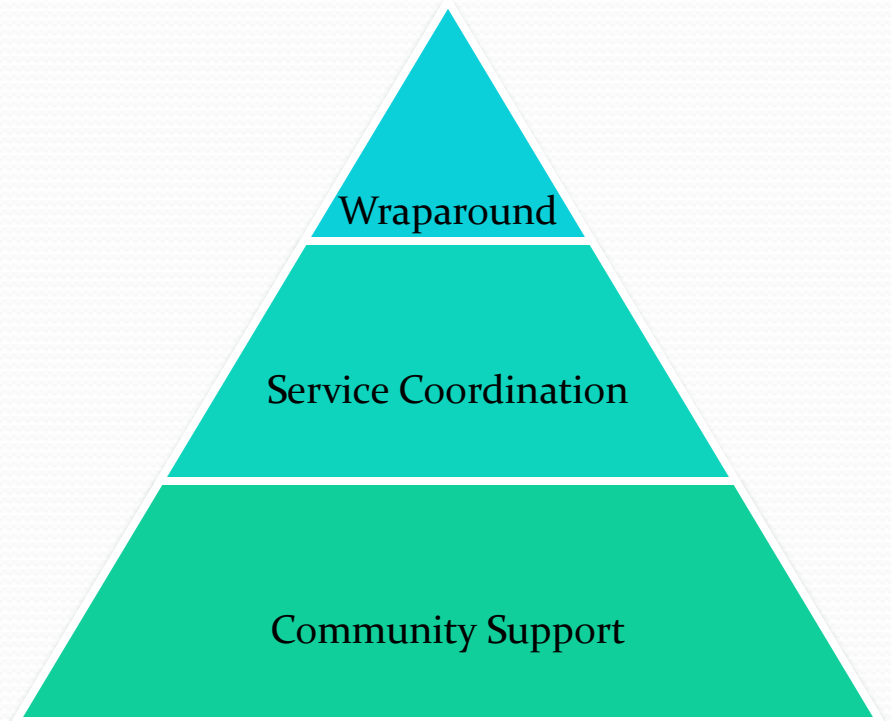
Not one thing works without the other



- **State Level**
 - Collaborative and Integrative Strategies, Activities and Processes
 - Statewide measures in place to capture overall state improvement
 - Increase Collaboration, funding, strategies, and sustainability
- **Community Level**
 - Collaborative and Integrative Strategies, Activities and Processes
 - Local communities determine which outcomes are most important to them and evaluate own performance
 - Increase Community Capacity, Reducing Disparities, Positive Outcomes
 - Referral Team-Bridge between Wraparound and System of Care
 - 3 Levels of care (Wraparound, Service Coordination, and Community Linkage)
- **Youth & Family Level**
 - Wraparound process and other collaborative strategies
 - Individual family measures in place to capture increase in mental health, support systems and positive behaviors
 - Improved outcomes
- **Technical Assistance, training, evaluation, feedback, and communication at all levels**

Referrals to a local SOC

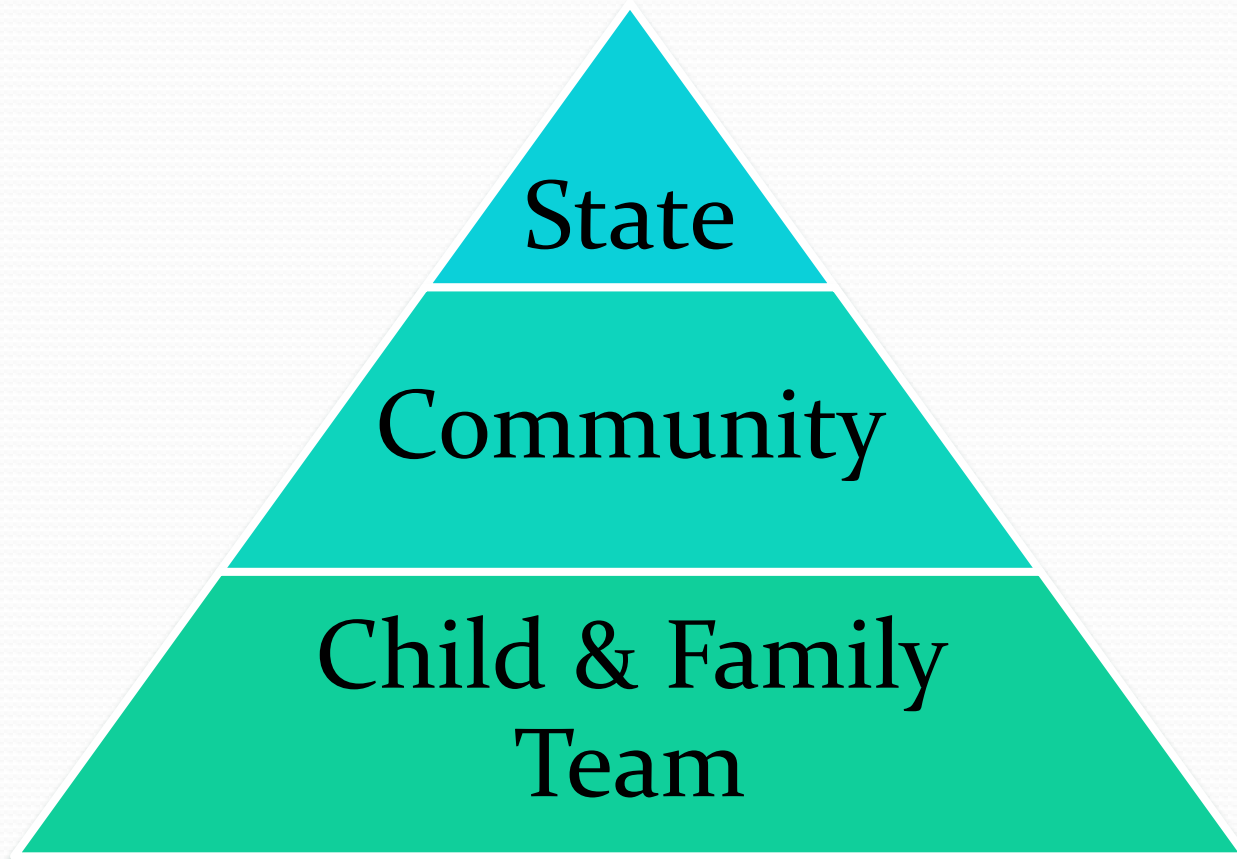
- All local communities have a “Referral Team” that act as the catch net for children in the community.
- Referral Team memberships are broad and include family members.
- Three Levels of Care:
 - Community Support
 - Service Coordination
 - Wraparound



Indicators of a Successfully Implemented Statewide SOC

- Communities coming together to address systemic issues around children's behavioral health
- Youth and families driving services and participating in systems reform
- Unique special projects designed to transform the child serving system and reduce disparities
- Local Wraparound process with centralized referral process

Family & Youth Involvement Woven throughout the Entire Process



Family & Youth Involvement



Building a Family Driven Youth Guided Infrastructure

- Family and Youth Involvement expected from the beginning by the use of the Stages of Development with new and emerging communities
- Hire family members into key positions
- Invest funding and resources to actively promote Family Involvement & Youth Guided at all levels
- Commit and value family members and youth's participation in professional partnerships as well as leadership development

Youth Empowerment and Healthy Youth Development



2009 Youth Leadership
Academy

OSOC Mission and Vision of Youth Guide Creates...

- Youth Empowerment via TIPS providing:
 - ✓ Training Opportunities for Young People
 - ✓ Opportunities for Growth (Holistic and Cultural)
 - ✓ Educational Opportunities
- Healthy Youth Development creating opportunities for:
 - ✓ Learning
 - ✓ Thriving
 - ✓ Connecting Young People to the Community
 - ✓ Creating the Opportunity to Work
 - ✓ Leading Civic and Community Development

Young Adults in Transition



- 2010 Legislative Coffee Chat

- Monthly advocacy event held at Oklahoma State Capitol
- Opportunity to advocate on issues directly impacting young adult lives, including barriers while transitioning into adulthood

- 2010 Indianapolis 500 Grand Prix

- Healthy development includes having fun!
- Young adults learned how to relax, enjoy healthy competition, celebrate success, and improve driving skills



Youth Advocate Advisor (YAA)



- A community level youth position responsible for:
 - Supporting each community's move to be "Youth Guided"
 - Unifying the young people in the community
 - Advocating for young people in the community
 - Organizing events and recruitment activities
 - Promoting and supporting the youth voice and choice in the community
 - Bringing youth expertise to the table
 - Receiving a paycheck for services rendered (i.e. getting paid)

FIDELITY

Ensure and monitor Wraparound fidelity

- Provide ongoing training, coaching, and credentialing
- Satisfaction surveys, Wraparound event monitoring, Wraparound Fidelity Index, built-in reports in Youth Information System for use by local staff, Ohio Scales individualized reports

Monitor Systems of Care Fidelity

- Annual site visit, site visit checklist, site review utilized with community for continuous improvement

Strategies/Tools for Continuous Quality Improvement

- Regular monthly, quarterly, and annual reports from all individual SOC communities and through a state aggregate report
- State-level Quality Assurance Team meets monthly and uses data to make continuous adjustments
- Child and Family Teams and local Community Teams also use data to adjust direction
- The ODMHSAS and State Advisory Team utilize outcomes reports to support budget requests for SOC

Oklahoma Systems of Care Monthly Site Assessment Report OSOC Statewide

Report Period: May 2010

	Month		12 Months	
	N	%	N	%
Families Served				
Enrolled ¹	717		1338	
In Engagement ²	98			
Total Served	815		1629	
Contract Requires	878			
Wraparound	795		1595	
Transitions	27		28	
Service Coordination ⁶	5		6	
After Care ⁷	1		32	
Referrals (total)	130		1603	
<i>Referral Source:</i>				
Family / Friend	7	5%	100	6%
Self	9	7%	116	7%
Child Welfare	22	17%	279	17%
Mental Health	48	37%	523	33%
Juvenile Justice	13	10%	148	9%
School System	16	12%	231	14%
Primary Care	5	4%	92	6%
Substance Abuse	0	0%	1	0%
Advocacy Group	3	2%	8	0%
Other	6	5%	73	5%
Unknown	0	0%	7	0%
Awaiting ³	12			
Reviewed ⁴	137		1497	
Approved (Any Service)	106	77%	1110	74%
New Enrollments ⁵	54		722	65%
Discharges (total)	69		712	
Overall LOS (months)	9		11	
Graduation	28	41%	225	32%
LOS	12		15	
Successful Discharge	10	14%	111	16%
LOS	10		11	
Separation	30	43%	370	52%
LOS	5		8	
<i>Separation Reason:</i>				
Moved Away	7	23%	66	18%
Family Withdrew	13	43%	173	47%
Referred Out	2	7%	21	6%
Institutionalized	4	13%	32	9%
Other	4	13%	78	21%

	Month		12 Months	
	Due / Complete	%	Due / Complete	%
Required Assessments*				
Youth	67 / 52	78%	792 / 604	76%
Caregiver	125 / 99	79%	1510 / 1237	82%
Worker	188 / 148	79%	2112 / 1776	84%

*Includes assessments due through April 2010

	# Families	\$ Spent	# Families	\$ Spent
Flex Funds	39	\$2,483	297	\$29,057

	# Youths	# Youths
Out-of-Home Placements	0	68

Initial Wrap Event Reporting

# Youths in Wrap for 60 Days:	763 ¹	
	# Youths with Initial Event	Average Days from Referral to Initial Event
	Crisis Plan	335 / 130
	Safety Plan	138 / 180
	SNCD	426 / 104
	Functional Assessment	328 / 128
	Wrap Plan	387 / 161
	Family Team	398 / 131

**Youths included are those who were active during the report month and had been enrolled in wraparound for at least 60 days at the start of the month.*

¹ Youths enrolled -- in wraparound or transitions -- on or before the end of the reporting period and either not discharged or discharged after the 2nd of the month. Service coordination is not included in this number.

² Youths approved by the referral team within the past 6 months but not yet enrolled at the end of the reporting period.

³ Youths referred within the past 90 days but not yet reviewed by a referral team.

⁴ Youths considered by a referral team during the period; may include referrals from previous months.

⁵ May include youths approved for admission in previous months; should not be compared to approved referrals for current month.

⁶ These include only youths for whom a wrap event was provided during the period in question.

⁷ Aftercare includes youths (from any service tier) for whom a wrap event was provided after their discharge date. Not included in 'Total Served' number



Outcomes

After 6 months with Systems of Care Wraparound
FY 2009 (n=811)

- Reduced Days of Out-of-home Placements = 31%
- Reduced School Detentions = 43%
- Reduced Suicide Attempts = 33%
- Reduced Arrests = 60%
- Reduced Contacts with Law Enforcement = 44%
- Reduced School Absences = 35%
- Reduced School Suspensions = 52%

Oklahoma Systems of Care Statewide Target Date 2014



*Celebration
Time*

Contact Information

- Jackie Shipp, 405-522-4142, jshipp@odmhsas.org
- Sheamekah Williams, 405-522-4152, sxwilliams@odmhsas.org
- Gerri Mullendore, 405-522-4155, emullendore@odmhsas.org
- Keith Pirtle, 405-522-6770, kpirtle@odmhsas.org

Website: www.ok.gov/odmhsas.org