

SAMHSA's Co-Occurring Center for Excellence (COCE)

CO-OCCURRING DISORDERS PROGRAMMING

NTAC Western Regional

April 10, 2007

Anthony J. Ernst, Ph.D.

Director of Technology Transfer

CDM Group, Inc.

SAMHSA's Co-Occurring Center for Excellence

(240) 223-3033

aj.ernst@cdmgroup.com

www.coce.samhsa.gov/

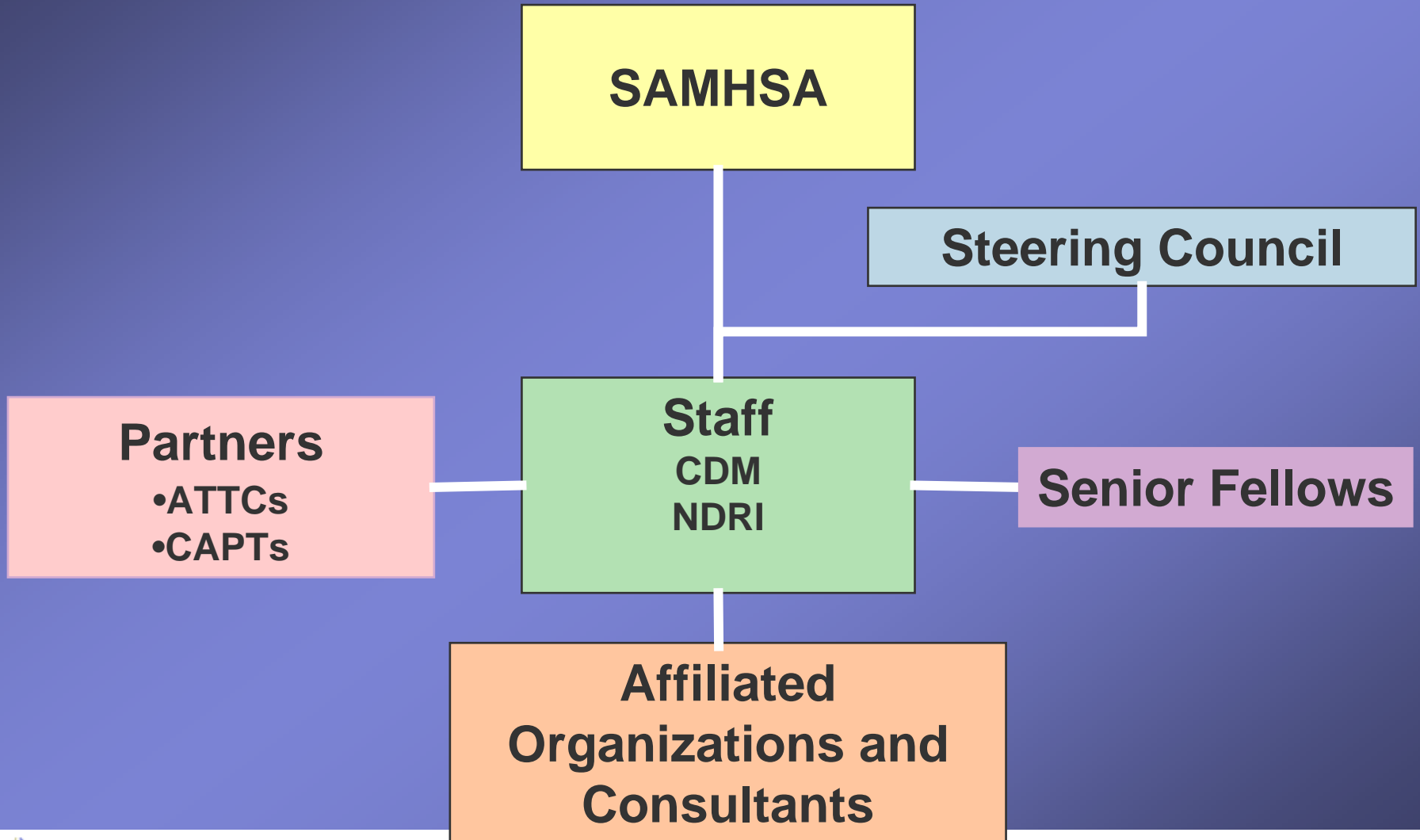
The COCE Mission

Receive and transmit advances

**Guide enhancements in infrastructure and
clinical capacities**

**Foster the infusion and adoption of
evidence- and consensus-based practices**

COCE Structure



Primary COCE Target Audiences for Technology Transfer

States →

State Grantees

- **COSIG States**
- **Policy Academy States**
- **Other States**

Sub-State Entities →

Provider Systems

- **Public/Private Behavioral Health Provider Agencies**
- **Cities**
- **Counties**
- **Tribes**
- **Universities**

Building Blocks for Constructing a Co-Occurring Treatment System

Clinical Capacity

Infrastructure

Evaluation and Monitoring

Information Sharing

Evidence and Consensus- Based Practices

Certification and Licensure

Workforce Development and Training

Financing Mechanisms

Screening, Assessment, & Treatment Planning

Systems Change

Definitions, Terminology, Classification

Services Integration

COCE STATE LEVEL T/A (To COSIG States)

MO, TX, LA, AR, HI, AK, PA, NM, VA, OK, AZ, CT, ME, VT, D.C. SC, MN

Approach to T/A is LONGITUDINAL

Group Technical Assistance

- Development of a 'Learning Community' of the States
 - bi-monthly conference calls with expert national presenters
 - monthly State-led call with presentations and discussion
 - development of an on-line COD product matrix

State off-site technical assistance (examples)

- curriculum reviews
- literature search
- liaison with expert consultants
- dissemination of COCE T/A products

COCE STATE LEVEL T/A

COSIG ON-SITE TECHNICAL ASSISTANCE (also available for non-COSIG States)

- Facilitation and contents expertise to State COD Taskforce/Steering Councils
- Consultation (on and off-site) to Taskforce/Steering Council workgroups
- Instrument selection and implementation of state-wide screening
- Plenary and workshop presentations for State COD conferences
- Consultations and strategic planning with State leadership
- TIP 42 Training for practitioners and leaders
- TIP 42 Train the Trainer
- Development of integrated treatment for adolescents with COD
- Systems development for adolescents with COD
- Facilitation and contents input for stakeholder development

COSIG STATE LEVEL T/A

Technical Assistance to Policy Academy States (available to non-policy academy states)

*AL, AZ, CT, HI, LA, ME MI, MO, NC, SD, AR, DE, IN, KS,
MD, MT, NY, PA, RI, CA, GA, IL, IA, NM, OK, TX, VA, WA*

- *Pre-Academy on-site visit*
 - *team building*
 - *contents input*
 - *strategic directions*
- *PRODUCT: COD State Action Plan (posted on COCE WEBSITE)*

COCE STATE LEVEL T/A

Examples of post academy technical assistance

- Implementation of the DDCAT COD Capacity Survey
- Consultation on COD finance
- Consultation on Native American engagement
- Implementation and instrument selection for COD screening
- Consumer engagement in decision making boards
- Integration with pre existing COD projects and plans
- Developments of COD cultural competency
- COD outcome measurement
- Evaluation design
- Conference faculty selection consultation
- Participation in COSIG workgroups

COCE STATE LEVEL T/A

States who have not received the COSIG Grant or participated in Policy Academy

COCE provides T/A to all States who submit a request. To date we have provided State level technical assistance to over 30 States

Examples of T/A for other States:

- ‘In-state’ 3 day policy academy producing a COD STATE Action Plan
- Development of adolescent treatment services
- Strategic consultation with State leadership
- Development of a clinical pathway for child and youth with COD
- Strategic planning and workforce training for drug courts
- Conference plenary and breakouts

COCE SUB-STATE T/A

- COCE's sub-state technical assistance responds to the training and technical assistance needs of a variety of entities including regional coalitions, hospitals, and behavioral health providers (SA, MH, HIV, homeless shelters, etc).
- The ultimate goals of COCE's sub-state technical assistance are
 - 1) linkage to the State's COD efforts
 - 2) the development and implementation of efficient and effective systems of care for COD.

COCE SUB- STATE T/A

SUB-STATE TECHNICAL ASSISTANCE INCLUDES:

- Facilitation and contents expertise to local stakeholders and community networks
- Strategic planning and action plan development with local leadership
- Consultation via weekly or monthly conference calls or on-site visit
- Plenary and workshop presentations for COD conferences
- Training for practitioners and administrators
- Linkage to other State, regional, and local COD efforts
- Content expertise in each COCE building block

**Examples of Sub-State
Technical Assistance in Each
Building Block**

Sub-State Technical Assistance Demonstration

Definition, Terminology, Classification

Entity: A large community mental health center in the Southeast requesting assistance with COD policy

Service: Implemented an agency Board-approved welcoming policy on COD that standardized COD terminology and service delivery

Sub-State Technical Assistance Demonstration

Screening, Assessment, and Treatment Planning

Entity: A regional behavioral health collaborative in the Midwest requesting assistance in developing a “feedback loop” for data to inform service delivery

Service: Developed a COD quality improvement process to improve patient outcomes in demonstration projects

Sub-State Technical Assistance Demonstration

Workforce Development

Entity: A large HIV/AIDS social service agency on the West Coast requesting assistance in COD training and community linkage

Service: Cross-training among stakeholders increased COD competencies and community recognition of COD, resulting in new county-wide funding for COD training and implementation

Sub-State Technical Assistance Demonstration

Evidence and Consensus Based Practices

Entity: A large housing organization serving 6000 per day in the Northeast requesting training and implementation of applicable evidence-based COD practices

Service: COD training and consultation on EBP resulted in COD stage-matched programming and treatment

Sub-State Technical Assistance Demonstration

Evaluation and Monitoring

Entity: A large teaching hospital in the Northeast requested assistance in monitoring COD patients in multiple programs

Service: Developed a “Clinical Home” for patients with COD resulting in improved evaluation and monitoring of their patients’ recovery

Sub-State Technical Assistance Demonstration

Services Integration

Entity: A State University Student Health Services in the Southwest requested assistance in integrating primary health, substance abuse, and mental health services to improve student outcomes

Service: Facilitated stakeholder groups to examine and implement services integration of primary health, substance abuse, and mental health clinical staff, leading to improved patient outcomes

Sub-State Technical Assistance Demonstration

Systems Change

Entity: A stakeholder group of 24 state and substate entities including providers, consumers and family members in the Southwest requesting assistance in organizing a COD conference

Service: Organized a statewide COD symposium resulting in a legislative briefing document and a bill to foster consultation, collaboration, and integration among systems and providers

Sub-State Technical Assistance Demonstration

Finance Mechanism

Entity: A medium sized coalition of mental health and substance abuse providers in the Midwest requesting assistance with Medicaid funding for COD

Service: Explored Medicaid financing options resulting in enhanced programming for COD

Sub-State Technical Assistance Demonstration

Certification and Licensure

Entity: A statewide Certification Board in the East requested assistance in COD conference development

Service: Consultation in the development of an Inaugural Conference on COD Recovery linking certification to patient outcomes with participation from national experts and SAMHSA Directors

Sub-State Technical Assistance Demonstration

Information Sharing

Entity: A stakeholder group of mental health and substance abuse providers in the Midwest requested assistance with issues related to confidentiality

Service: Examined 42 CFR and HIPPA requirements in developing a patient release of information document

If seeking further clarification about the work of COCE, prior to requesting TA, please use the following contacts:

State Information:

**John Challis , Project Director- COCE-State Level TA, NDRI
(212) 845-4513**

Sub-State Information:

**Anthony J. Ernst, Ph.D., Director of Technology Transfer,
CDM Group
(240) 223-3033**

www.coce.samhsa.gov/