

Shaping an Infrastructure for Geriatric Psychiatry in Wisconsin

**NASMHPD – Older Persons' Division
2007 Annual Meeting; Louisville, KY
August 26 – 28, 2007**

**Catherine Swanson-Hayes, MSSW
Ruthanne M. Landsness, MA, AbD**

Purpose

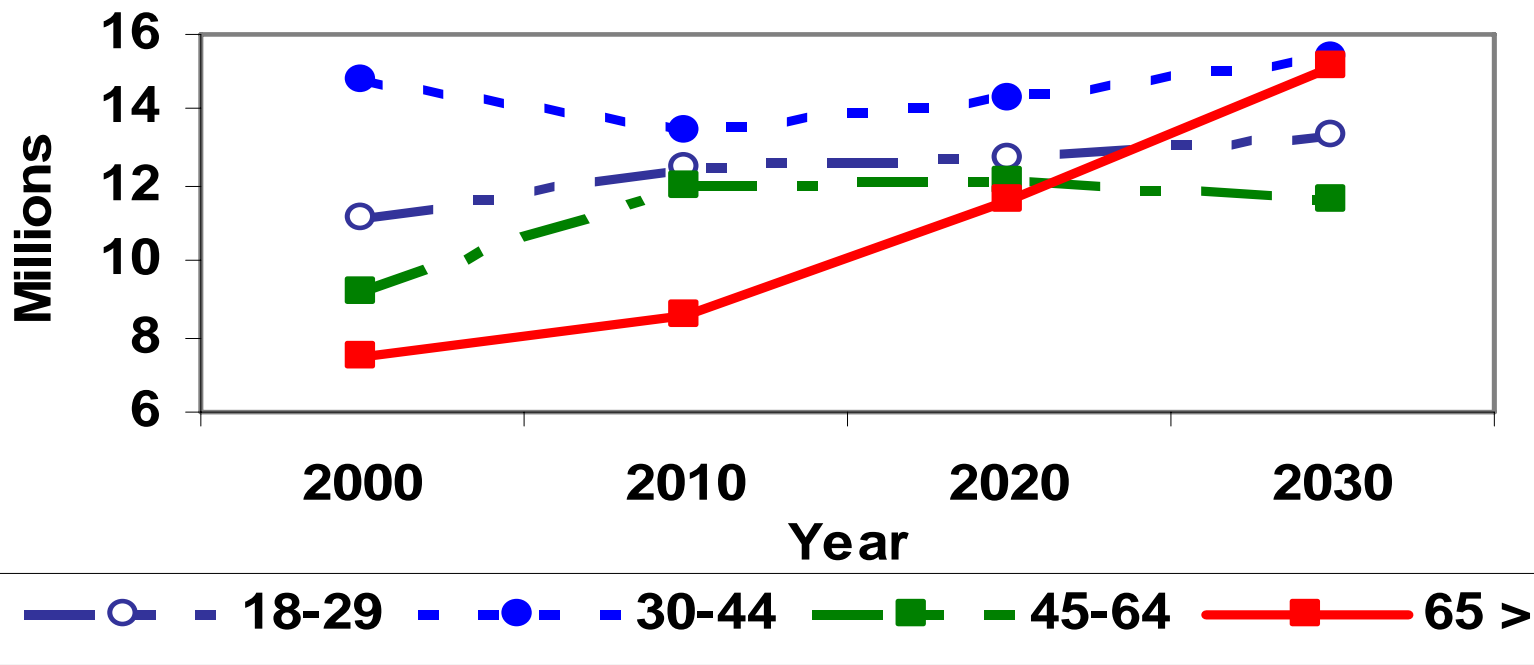
- Introduce or reintroduce you to the Wisconsin Geriatric Psychiatry Initiative (WGPI)
- Explore the WGPI methodology, guiding principles, results, next steps

Background – National Level

- The Demographic Imperative
- Federal Priorities
- Workforce Capacity

Trajectory Over Time

Estimated Prevalence of Major Psychiatric Disorders By Age Group



Fed Priorities; Unmet Needs

- 2006- Older Americans Act reauthorized
- 2007 – SAMHSA's action plan
- Workforce Capacity – The current 9,000 physicians with geriatric certification represent less than half the current need.

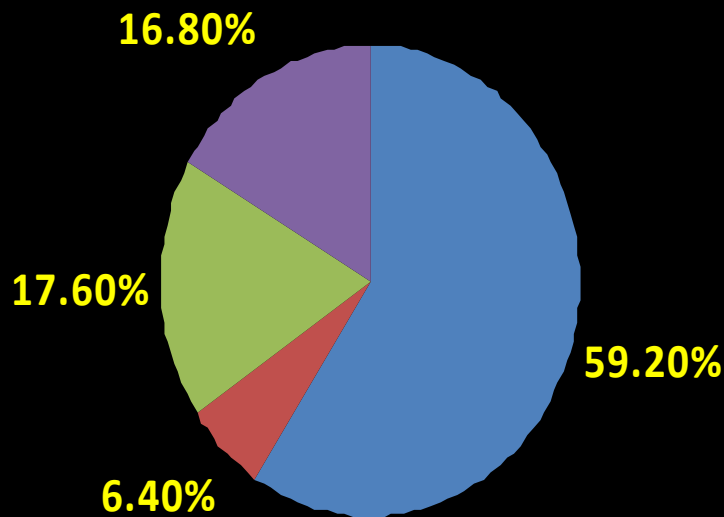
The View from Wisconsin

- Demographics mirror the national scene
- GP Workforce Capacity
- MH service needs – 25% in need; 9% receiving services

MH & WI DHFS LTC Programs

PACE /Partnership Members

Jan 2007



■ Depression/Anxiety

■ Other Manageable
MH Disturbance

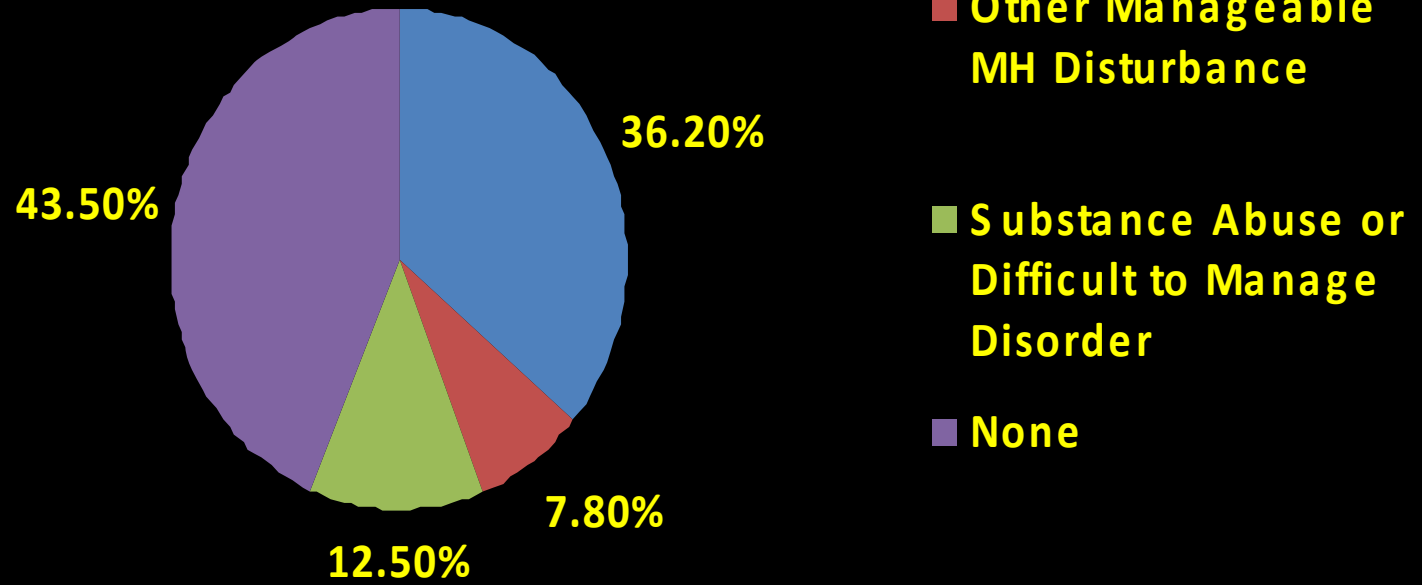
■ Substance Abuse or
Difficult to Manage
Disorder

■ None

MH & WI DHFS LTC Programs

Family Care CMO Members

Jan 2007



WGPI- The Wisconsin Response

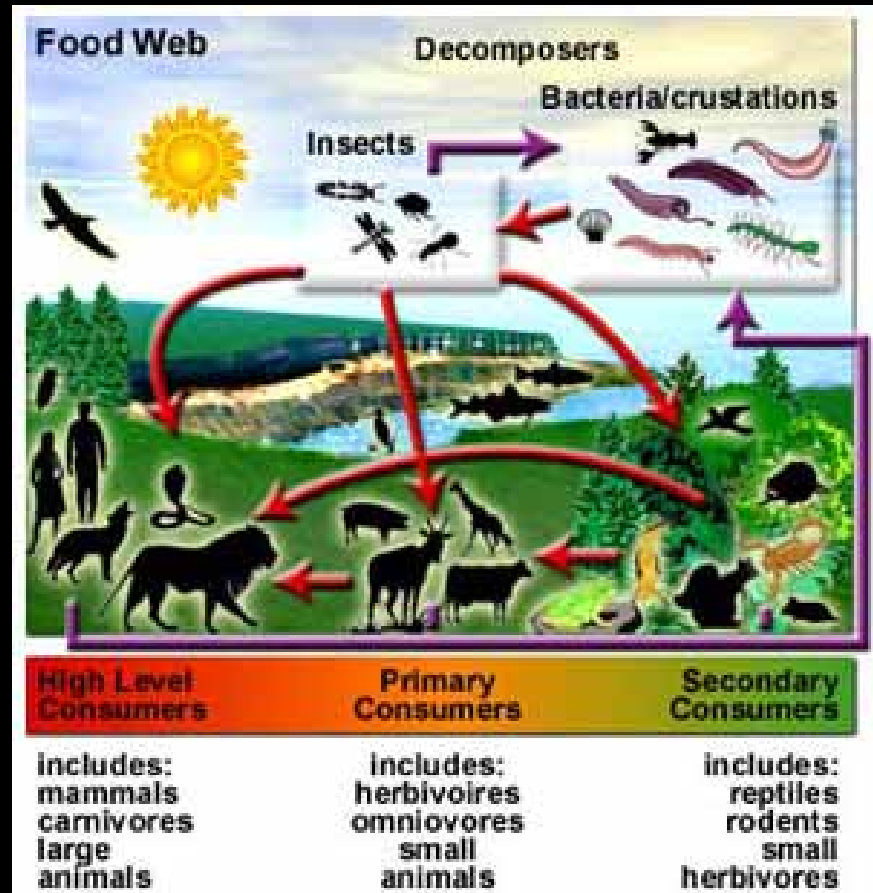
- Brainchild of Dr. Tim Howell, GP at VA, Madison, WI
- Award for Educational Innovation – Annapolis Coalition on Behavioral Health Workforce Education

WGPI–Building the Methodology

- Direct Care Model – traditional model
- Indirect Care Model
 - Supported by research
 - Conducive to working w IDTs in WI LTC Programs
 - A response to challenges of usual clinical approaches

The WGPI Methodology – GP as Ecology

- Individual:
 - Atoms, molecules
 - Cells, organs
 - Organisms, groups
 - Organizations
- Systems:
 - Solutions
 - Executive functions
 - Ideas
 - Values
 - Social networks
 - Cultures



The Wisconsin Star Method

**Medication
Issues**

**Social
Issues**

**Medical
Issues**

**Symptom,
Problem**

**Personal Issues
(Personality)**

**Psychiatric
Issues**

Power of the Star as a Visual

- Incorporates five domains – encourages consideration of all domains
- Conducive to application of principles of heuristics, social networking, visualization
- Simple yet can deal w complexities
- Flexible and Adaptable

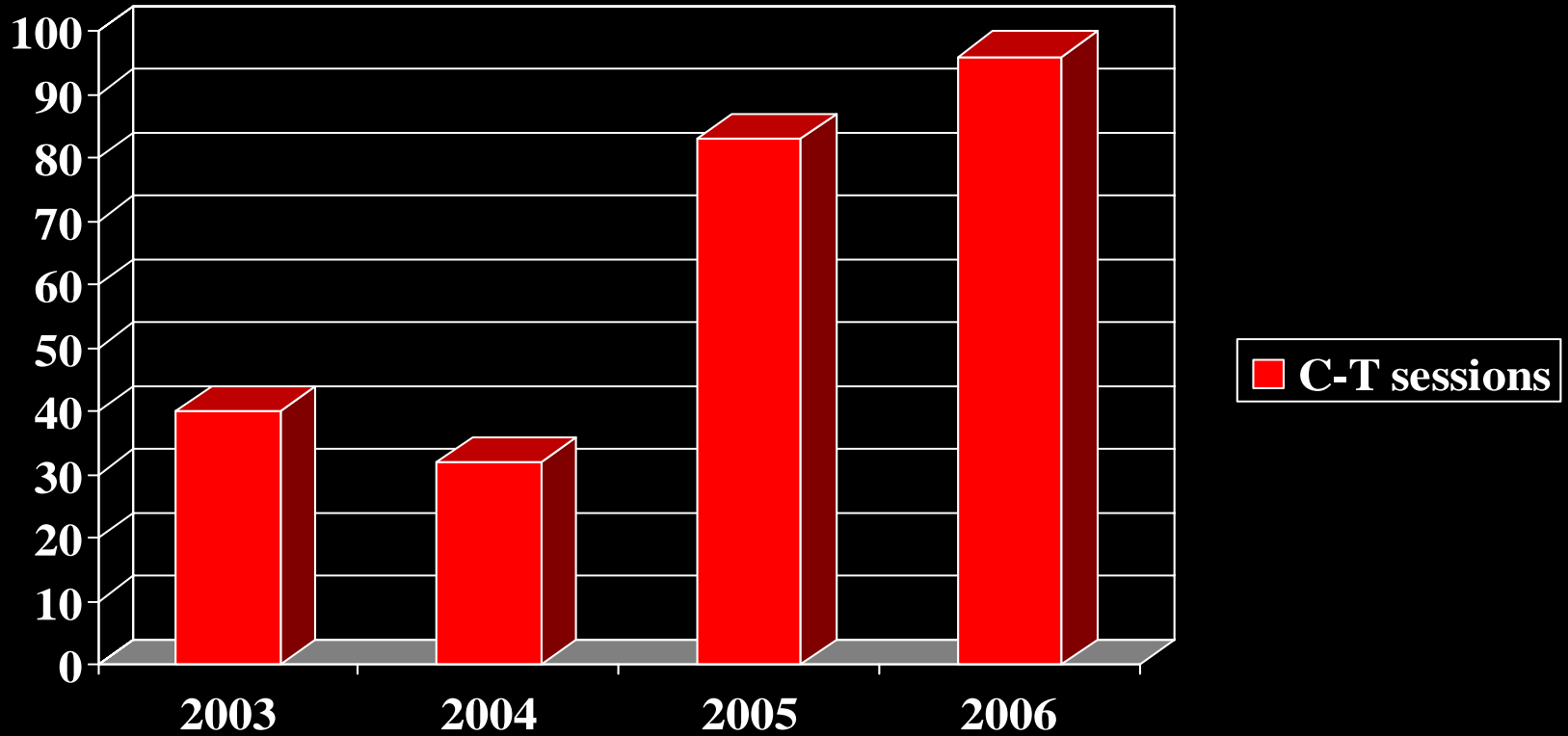
WGPI Evidence-Based Components

- Applies principles of Geriatric Psychiatry
- Applies principles of Adult Learning
- Applies principles of a social entrepreneurial approach to funding

Results

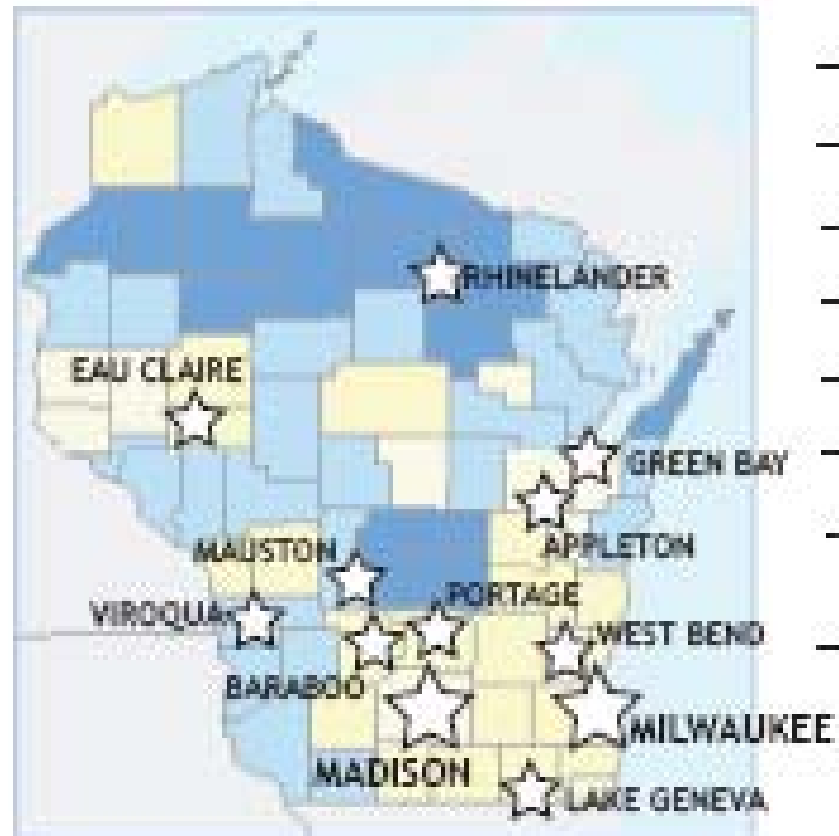
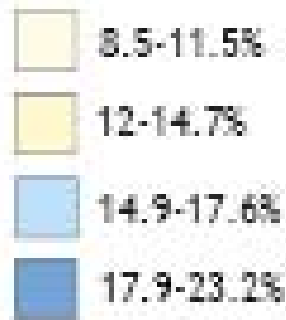
- Have begun to educate the workforce
 - Team Level
 - Physician Level
 - Community Level

Consultation/Training Sessions



Geography of WGPI Interventions

Proportion of Older Adults (65+) by County



Next Steps

- Develop more objective outcome criteria
- Continue to develop the WGPI infrastructure
- Create enough co-enzymes to make a vitamin

References – See Handout

Contact Information

- Catherine Swanson-Hayes
 - WI DHFS, Bureau of MH & Substance Abuse Services ; swanscl@dhfs.state.wi.us
 - Ruthanne Landsness, Quality Improvement Consultant
 - APS Healthcare rlandsness@apshealthcare.com
- Madison, WI